



PORTS AND YACHTING DIRECTORATE



Transport Malta

Malta Transport Centre
Marsa, MRS 1917
Malta

Tel: (356) 2122 2203
Fax: (356) 2125 0365
Email: info.tm@transport.gov.mt

www.transport.gov.mt

LOCAL NOTICE TO MARINERS No 58 of 2015

Our Ref: TM/PYD/01/15

12th August 2015

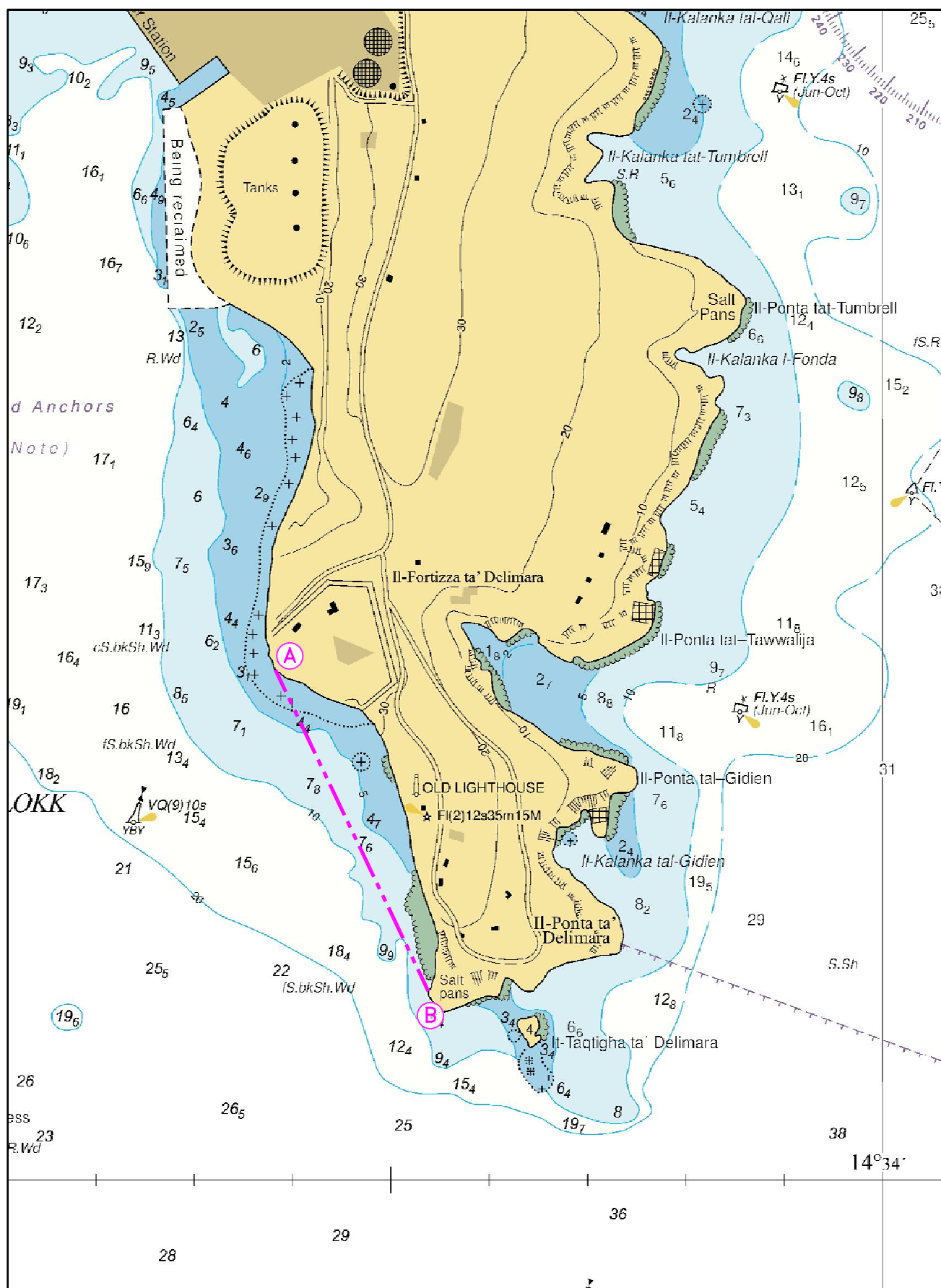
Falling Rocks at il-Ponta ta' Delimara

The Ports and Yachting Directorate, Transport Malta, informs mariners of the danger when navigating in very close proximity to il-Ponta ta' Delimara due to falling rocks from the cliff face in the area bounded by the imaginary line between points A and B.

The stretch of coast on the western side of il-Ponta ta' Delimara, from below il-Fortizza ta' Delimara to the salt pans at the southern end of il-Ponta ta' Delimara are to be avoided.

In view of the above Mariners are not to navigate below the cliff face and if this is absolutely required they are to navigate with extreme caution.

Chart affected BA chart 36.



©British Crown Copyright 1970, 1983, 1986, 1988, 1999, 2000.
All rights reserved

The UK Hydrographic Office makes the accompanying data
available to Transport Malta under the terms and
conditions of agreement HD 1427/020930/01.

DISCLAIMER

Whilst the UK Hydrographic Office has endeavoured to ensure
that the material supplied is suitable for the purpose described,
it accepts no liability (to the maximum extent permitted by law)
for any damage or loss of any nature arising from its use.
The material supplied is used entirely at the Recipient's own risk.