



PORTS AND YACHTING DIRECTORATE

Transport Malta

LOCAL NOTICE TO MARINERS NO 46 of 2015

Our Ref: TM/PYD/132/89

9 July 2015

Malta Transport Centre
Marsa, MRS 1917
Malta

Tel: (356) 2122 2203
Fax: (356) 2125 0365
Email: info.tm@transport.gov.mt

www.transport.gov.mt

Filming in different locations – Malta West Coast

The Ports and Yachting Directorate, Transport Malta notifies all mariners and sea craft owners that filming activities will take place on the West Coast of Malta between the 20th July 2015 and the 25th July 2015. Time of filming will be between 0600 hours and 2000 hours. (Refer to charts attached)

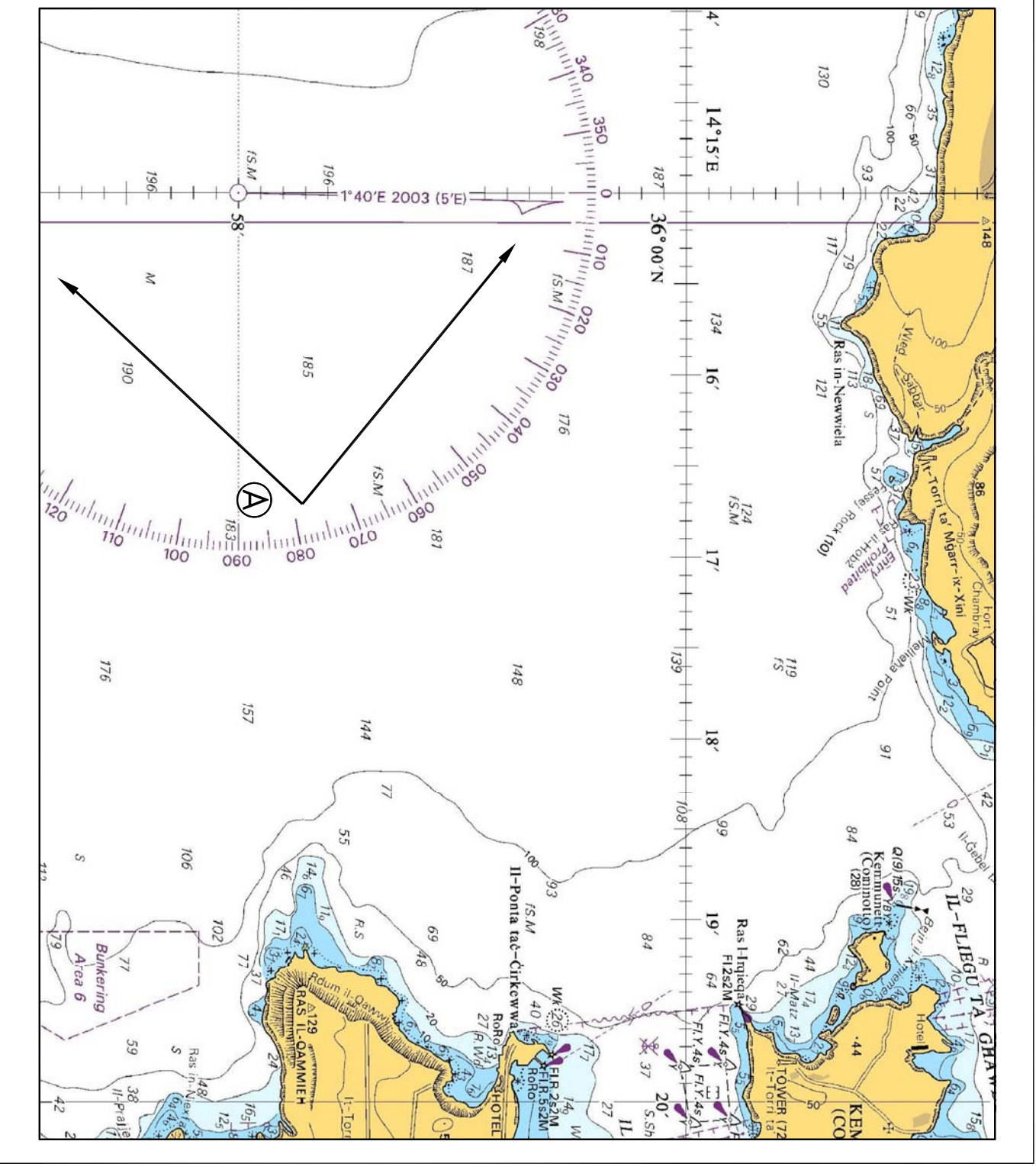
- 1) Part of the filming will take place 3km west off Ras il-Qammieh and out to sea (from point "A" as shown on attached chart 1)
Dates of filming are 20th July 2015, 21st July 2015 and 24th July 2015. On 25th July 2015 filming will take place from Helicopter. Another part of the filming will be underwater in shallow waters. Exact area is to be defined on the day (depending on the weather) and hence mariners are required to cooperate with the filming crew.
- 2) Another part of the filming will take place at Gnejna Bay and out to sea (from point "B" as shown on attached chart 2).
Date of filming is 22nd July 2015.

In view of the above, a clear horizon is required when filming. The above dates may be changed depending on the weather.

A wide berth to the above areas is requested.

Mariners navigating in the areas indicated above, during filming, are requested to keep watch on VHF Channel 12 and cooperate with the crew and police in the area. They are to comply with instructions issued by Valletta Port Control (Valletta VTS).

Charts affected: BA 194, 2537 and 2538.



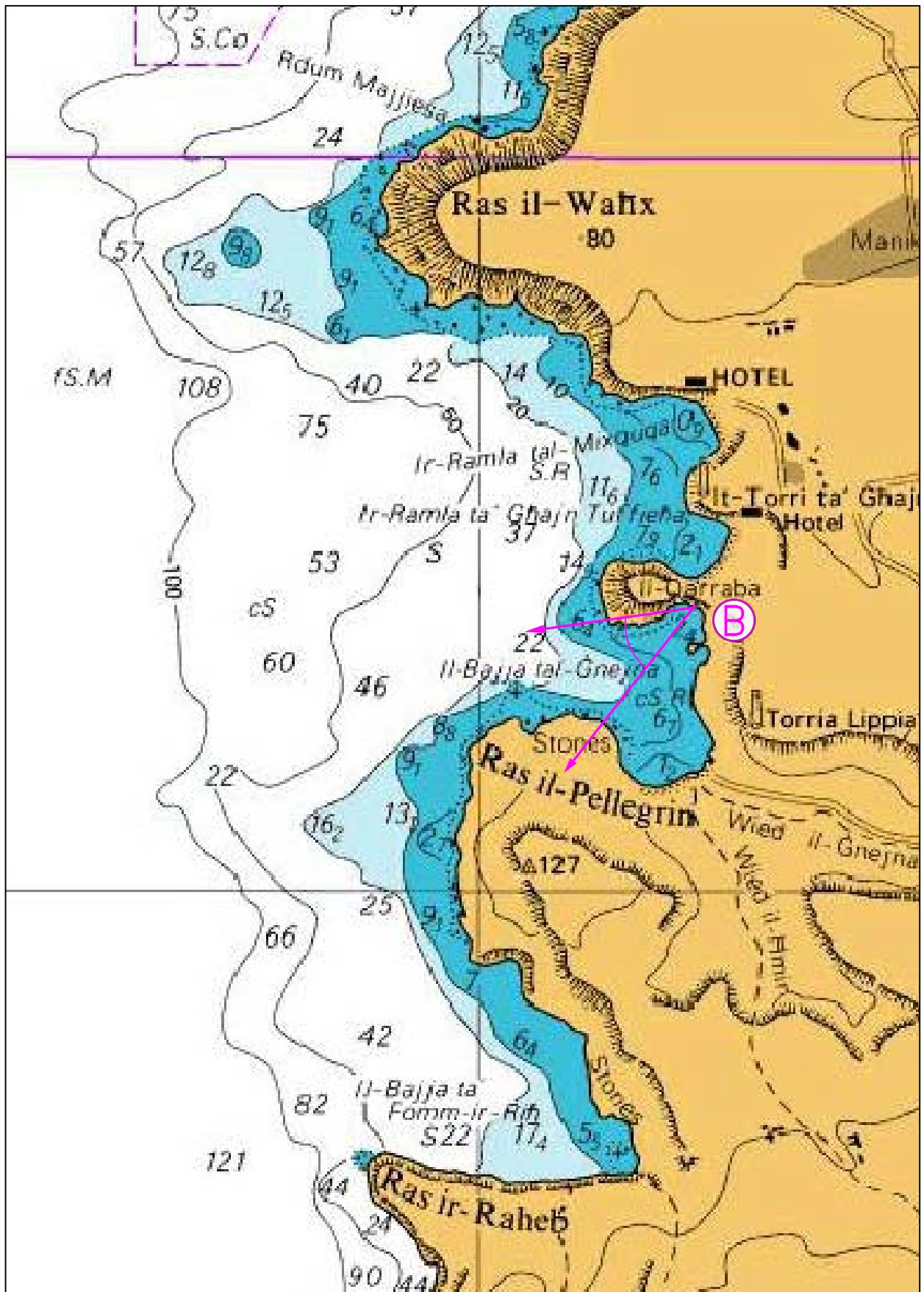
©British Crown Copyright 1970, 1983, 1986, 1988, 1999, 2000.
 All rights reserved

The UK Hydrographic Office makes the accompanying data available to Transport Malta under the terms and conditions of agreement HD 1427/020930/01.

DISCLAIMER

Whilst the UK Hydrographic Office has endeavoured to ensure that the material supplied is suitable for the purpose described, it accepts no liability (to the maximum extent permitted by law) for any damage or loss of any nature arising from its use. The material supplied is used entirely at the recipient's own risk.

Chart 1



©British Crown Copyright 1970, 1983, 1986, 1988, 1999, 2000.
All rights reserved

The UK Hydrographic Office makes the accompanying data available to Transport Malta under the terms and conditions of agreement HD 1427/020930/01.

DISCLAIMER

Whilst the UK Hydrographic Office has endeavoured to ensure that the material supplied is suitable for the purpose described, it accepts no liability (to the maximum extent permitted by law) for any damage or loss of any nature arising from its use. The material supplied is used entirely at the Recipient's own risk.