



PORTS AND YACHTING DIRECTORATE

Transport Malta

LOCAL NOTICE TO MARINERS NO 42 of 2015

Our Ref: TM/PYD/26/95/1

7 July 2015

Malta Transport Centre
Marsa, MRS 1917
Malta

Tel: (356) 2122 2203
Fax: (356) 2125 0365
Email: info.tm@transport.gov.mt

www.transport.gov.mt

Fireworks Display from Rinella Bay and Kalkara Creek – Grand Harbour

The Ports and Yachting Directorate, Transport Malta notifies mariners that fireworks will be let off from Rinella Bay and Kalkara Creek (Points A and B as shown on attached chart) on the dates and times as follows:

In Kalkara Creek from the area known as “tax-Xewkija (point A) :

| | |
|-----------------------|---------------------------------|
| Thursday 16 July 2015 | From 2000 hours till 0000 hours |
| Friday 17 July 2015 | From 2030 hours till 0000 hours |
| Saturday 18 July 2015 | From 2200 hours till 2330 hours |
| Sunday 19 July 2015 | From 1900 hours till 0000 hours |

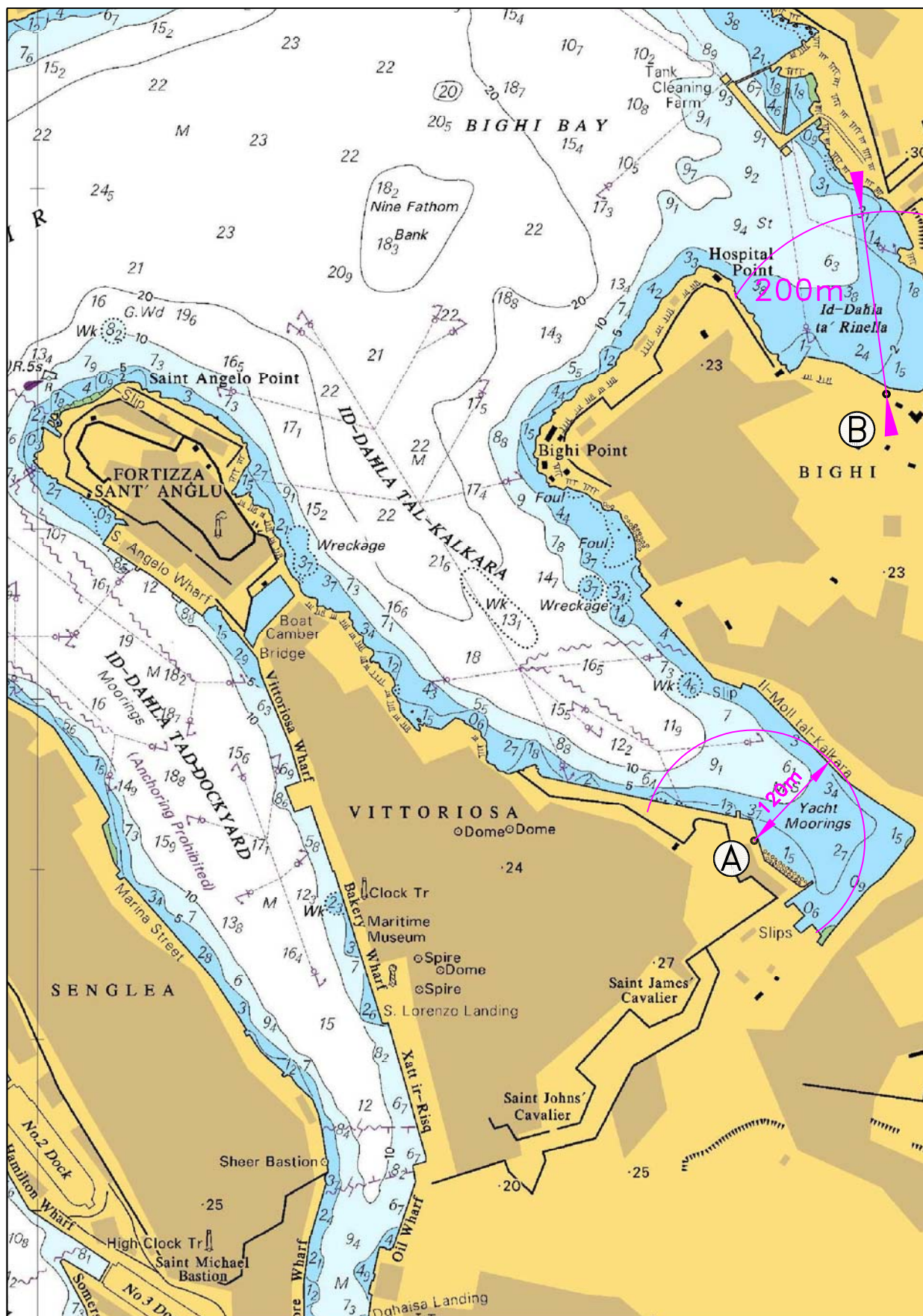
In Rinella Bay Kalkara (point B):

| | |
|------------------------|--|
| Wednesday 15 July 2015 | From 0800 hours till 0830 hours, from 1200 hours till 1230 hours, from 2130 hours till 2330 hours |
| Friday 17 July 2015 | From 0800 hours till 0830 hours, from 1200 hours till 1230 hours and from 2200 hours till 0000 hours |

In view of the above, mariners are informed to give a wide berth of 200 meters from Rinella Bay, Kalkara (as shown on attached chart point B). All Vessels within 120 meters radius from the area known as tax-Xewkija in Kalkara Creek (as shown on attached chart point A) are to be removed on the above-mentioned dates and times of the displays.

Mariners are to obey directives issued by the Valletta Port Control (Valletta VTS), and by Police in the area.

Chart Affected: BA 177



©British Crown Copyright 1970, 1983, 1986, 1988, 1999, 2000.
All rights reserved

The UK Hydrographic Office makes the accompanying data
available to Transport Malta under the terms and
conditions of agreement HD 1427/020930/01.

DISCLAIMER

Whilst the UK Hydrographic Office has endeavoured to ensure
that the material supplied is suitable for the purpose described,
it accepts no liability (to the maximum extent permitted by law)
for any damage or loss of any nature arising from its use.
The material supplied is used entirely at the Recipient's own risk.