



PORTS AND YACHTING DIRECTORATE

Transport Malta

## LOCAL NOTICE TO MARINERS NO 39 of 2017

Malta Transport Centre  
Marsa, MRS 1917  
Malta

Our Ref: TM/PYD/63/95 Vol VI

Tel: (356) 2122 2203  
Fax: (356) 2125 0365  
Email: [info.tm@transport.gov.mt](mailto:info.tm@transport.gov.mt)

[www.transport.gov.mt](http://www.transport.gov.mt)

24 May 2017

### Benthic survey in Mgarr Harbour - Gozo

The Ports and Yachting Directorate, Transport Malta notifies mariners that a benthic survey will be carried out in Mgarr Harbour - Gozo, between **Monday 29<sup>th</sup> May 2017** and **Friday 9<sup>th</sup> June 2017** (weather permitting) in the area shown hatched in red on attached chart.

The Benthic survey will be carried out by scuba divers and an ROV. The support vessels Atlantis II or Julie Pell will be used during the survey. The support vessel will be moving slowly and will display the international code of Signals flag "A" when diving is taking place and the international code of Signals flag "D" when the ROV is deployed.

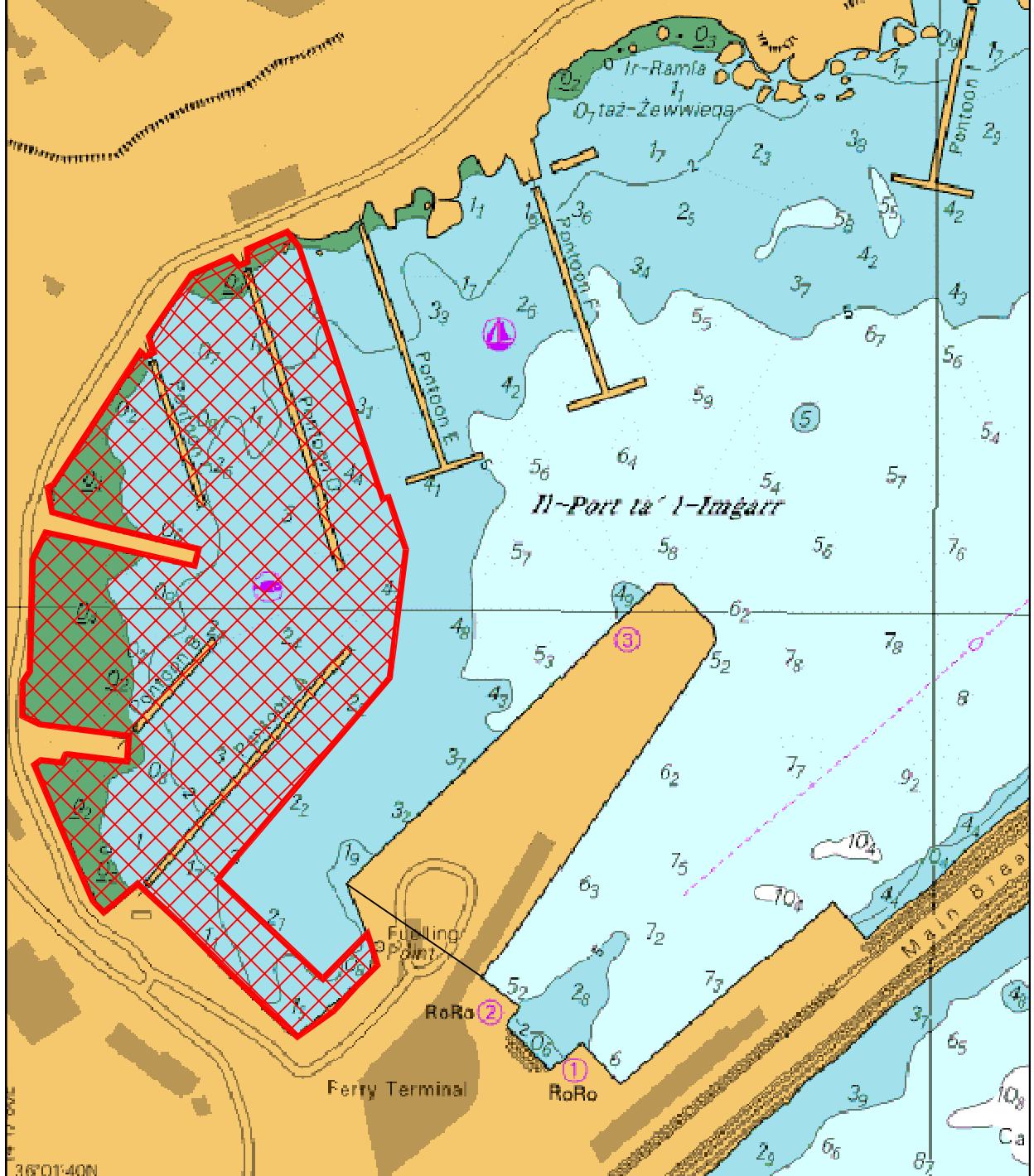
Masters and operators of vessels are advised to keep a sharp lookout, navigate with caution and slow speed and give the above support vessels a wide berth. They are to comply with instructions given by Valletta Port Control (Valletta VTS) on VHF Channel 12.

Chart affected:BA 177

Positions referred to WGS 84 DATUM.

# D GHAWDEX IL-PORT TA' L-IMGARR

1:3000  
Magnetic Variation: 2°30'E 2013 (5'E)



©British Crown Copyright 1970, 1983, 1986, 1988, 1999, 2000.  
All rights reserved

The UK Hydrographic Office makes the accompanying data available to Transport Malta under the terms and conditions of agreement HD 1427/020930/01.

#### DISCLAIMER

Whilst the UK Hydrographic Office has endeavoured to ensure that the material supplied is suitable for the purpose described, it accepts no liability (to the maximum extent permitted by law) for any damage or loss of any nature arising from its use. The material supplied is used entirely at the Recipient's own risk.