



PORTS AND YACHTING DIRECTORATE

Transport Malta

LOCAL NOTICE TO MARINERS NO 39 of 2015

Our Ref: TM/PYD//83/97/004

24 June 2015

Malta Transport Centre
Marsa, MRS 1917
Malta

Tel: (356) 2122 2203
Fax: (356) 2125 0365
Email: info.tm@transport.gov.mt

www.transport.gov.mt

The President's Cruise for Solidarity 2015

The Ports and Yachting Directorate, Transport Malta, notifies that the Office of the President is organising The President's Cruise for Solidarity on Sunday 12 July 2015. This event is in aid of the Community Chest Fund, under the auspices of H.E. Marie-Louise Coleiro Preca, President of Malta.

Cruise programme is as follows:

Sunday, 12 July 2015

0900 hours

From 0900 hrs till 1000 hrs there will be a display of Jet Fly and Fly board water sports which will take place at Pinto Wharf No 5. (as indicated on chart A in Area "A")

At 0930 hrs participating vessels are to assemble in Valletta Grand Harbour in the designated areas. The area is South West of il-Ponta ta' l-Isla and Pinto wharf. (as shown on attached Chart A) or other areas which may be designated by Enforcement Agencies. They are not to navigate below the St Elmo Bridge as works are in progress. The fairway must be kept clear at all times. No unauthorised vessels are allowed to navigate into Dockyard Creek or South East of Senglea Point and St. Angelo point.

1030 hours

The Leading Vessel, with H.E. the President of Malta on Board will depart from Dockyard Creek at 1030hrs. It will follow a route to pass through the Valletta Grand Harbour main channel, out of the Breakwaters and cruise along the coast towards St Paul's Bay. (refer to chart B). Once the leading vessel passes St Angelo Point, all vessels are to follow in accordance with the instructions given by the Enforcement Agencies.

1100 hours to 1400 hours

Waters sports will be carried out off the Bugibba quay in the area shown on chart "C". These are expected to start at about 1100 hrs and will end upon the arrival of H.E. the President of Malta which is expected to be between 1230 hrs and 1300 hrs.



Transport Malta

The leading vessel will head to the above mentioned area off Bugibba Breakwater.

In view of these activities the outer side of Bugibba Breakwater will be restricted and no vessel is allowed to berth from 1030 hrs until this event is over which will be about 1400 hrs.

Participants are to follow the leading vessel at all times and under no circumstances are to overtake it. Mariners not participating are to navigate with caution and to keep a sharp lookout when in the vicinity to the above-mentioned event and when sighted they are to give the participants a wide berth. They are to obey any instructions that are issued by Valletta Port Control (Valletta VTS), AFM Patrol Boats and Transport Malta, Enforcement Vessels that are in the area and are to abide by the terms and conditions of the event. <https://mccf.events.com.mt/presidentscruise>

In view of the above Valletta Grand Harbour will be closed for traffic between 0930 hours and 1200 hours or as directed by VTS. Only participating vessels will be allowed to enter harbour to proceed to the designated areas.

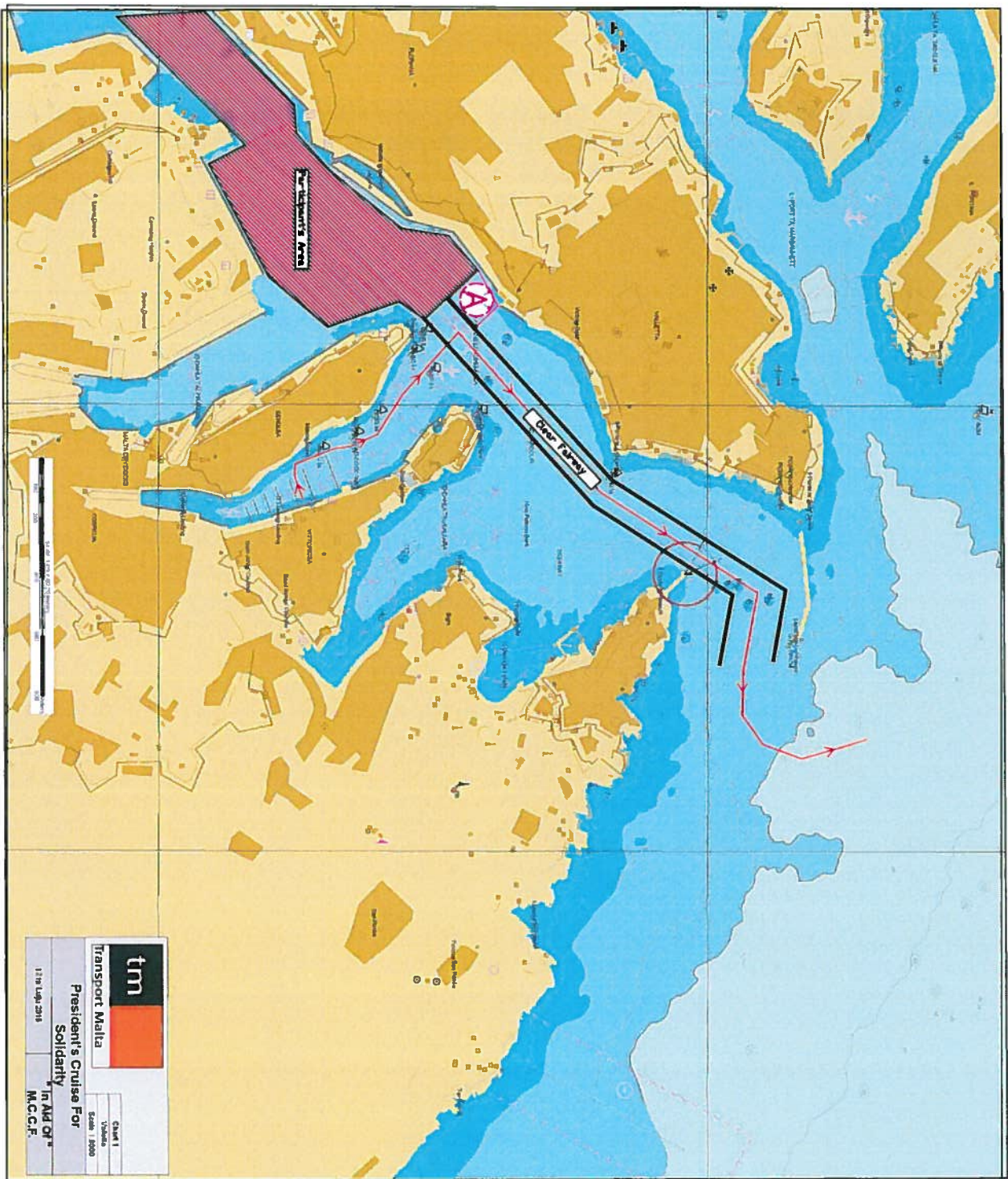
Chart affected BA Chart 177.



©British Crown Copyright 1970, 1983, 1986, 1988, 1999, 2000.
All rights reserved

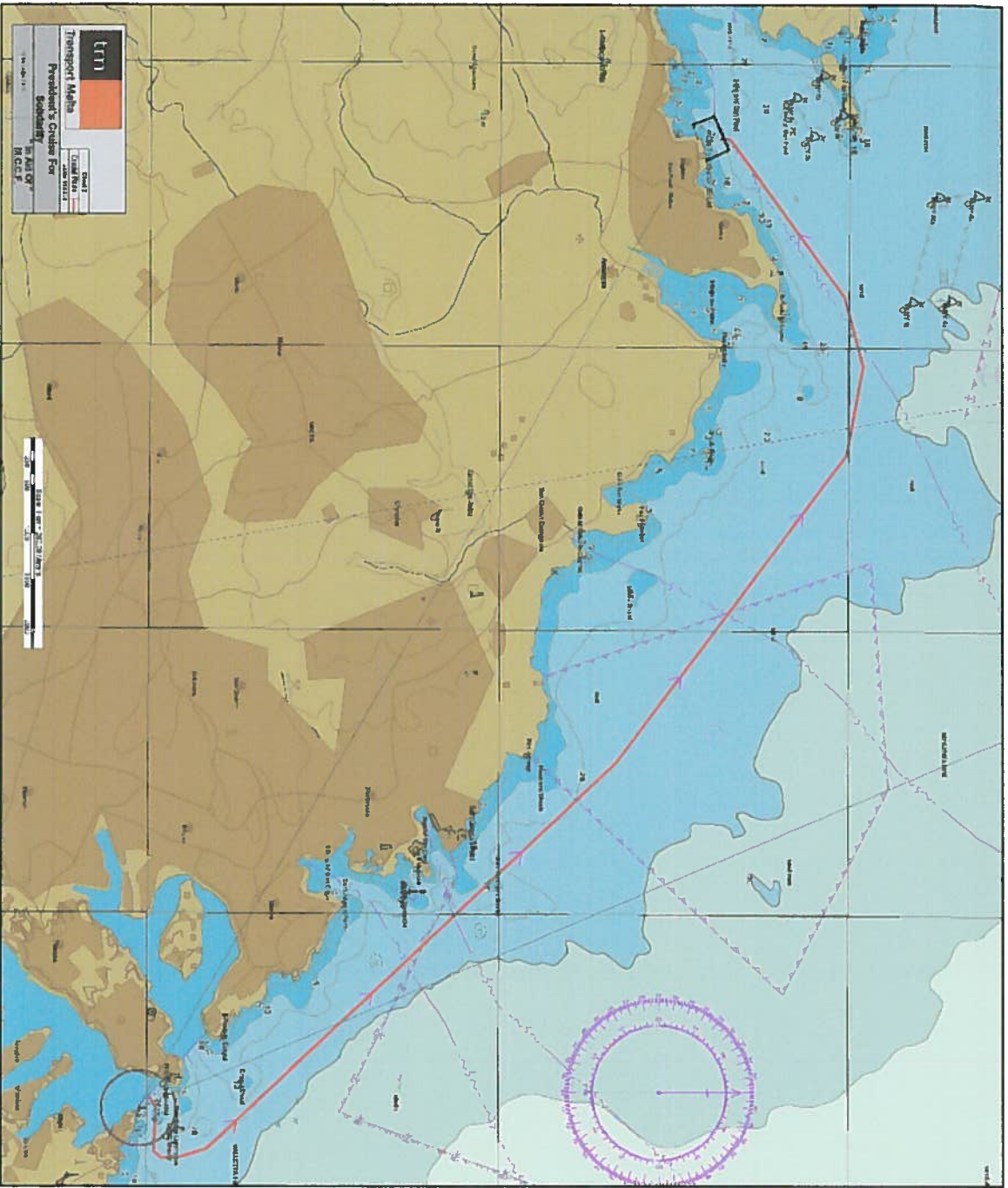
DISCLAIMER

Whilst Transport Malta has endeavoured to ensure that the material supplied is suitable for the purpose described, it accepts no liability (to the maximum extent permitted by law) for any damage or loss of any nature arising from its use. The material supplied is used entirely at the Recipient's own risk.



tm	CHART 1
Transport Malta	Volume
President's Cruise For	Scale 1:8000
Solidarity	
In Aid of	
M.C.C.F.	
12th July 2015	

Chart A



LT1
 Transport Malta
 President's Order for
 Declaration
 M.C.C.F.

©British Crown Copyright 1970, 1983, 1986, 1989, 1999, 2001.
 All rights reserved.

DISCLAIMER

Whilst Transport Malta has endeavoured to ensure that the material supplied is suitable for the purpose described, it accepts no liability (to the maximum extent permitted by law) for any damage or loss of any nature arising from its use. The material supplied is used entirely at the recipient's own risk.

Chart B

© British Crown Copyright 1970, 1983, 1986, 1988, 1999, 2000.
All rights reserved

DISCLAIMER

Whilst Transport Malta has endeavoured to ensure that the material supplied is suitable for the purpose described, it accepts no liability (to the maximum extent permitted by law) for any damage or loss of any nature arising from its use. The material supplied is used entirely at the Recipient's own risk.

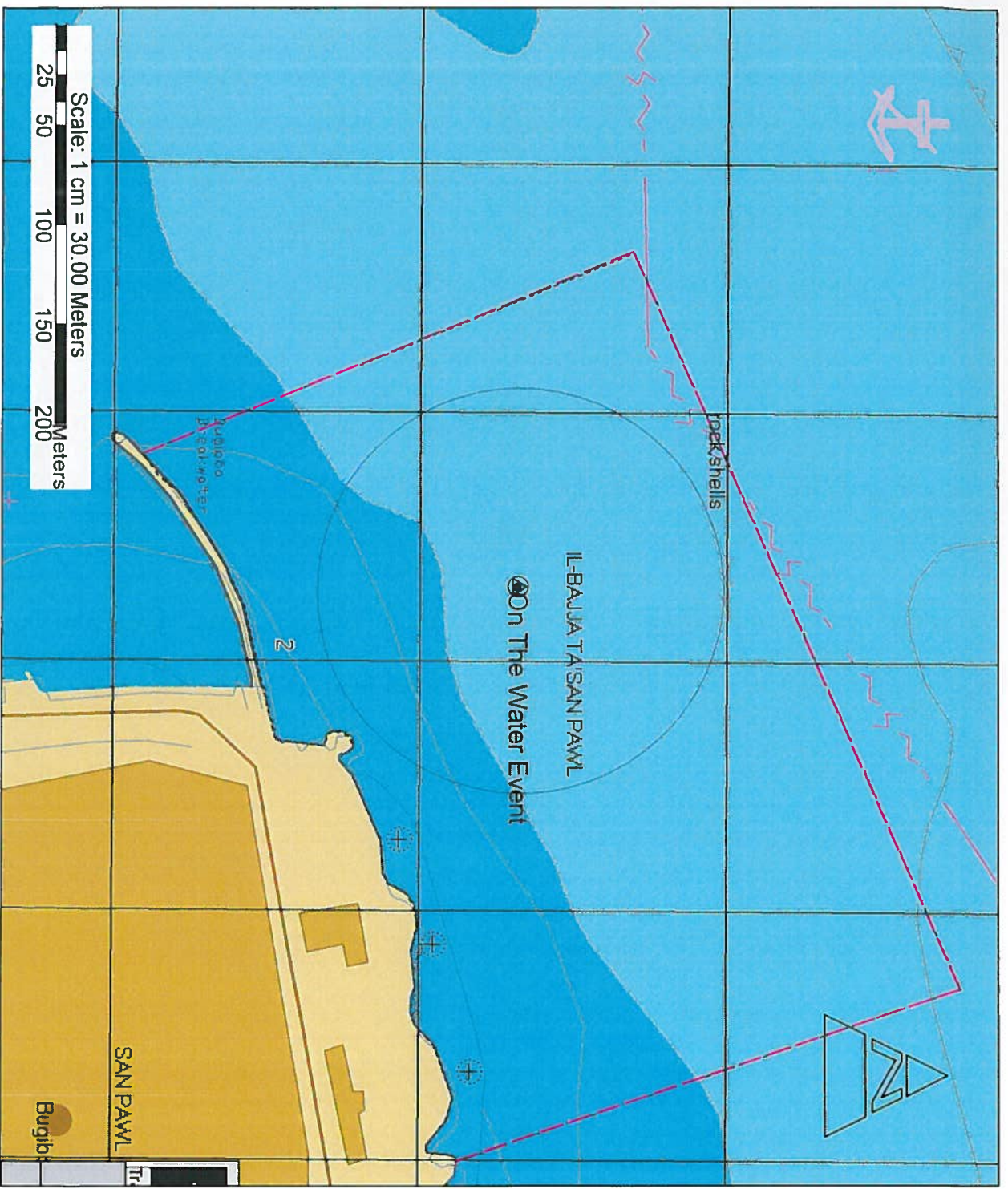


Chart C