



Transport Malta

Malta Transport Centre  
Marsa, MRS 1917  
Malta

Tel: (356) 2122 2203  
Fax: (356) 2125 0365  
Email: [info.tm@transport.gov.mt](mailto:info.tm@transport.gov.mt)

[www.transport.gov.mt](http://www.transport.gov.mt)

PORTS AND YACHTING DIRECTORATE

## NOTICE TO MARINERS NO 35 of 2017

Our Ref: TM/PYD/229/81  
TM/PYD/155/89

14 July 2017

### Amendment to Notice To Mariners No 33 of 2017.

Reference is made to Notice to Mariners No. 33 of 2017 (Further to Notice to Mariners Nos. 12 of 2017, 26 of 2017 and 28 of 2017 - Chart Corrections).

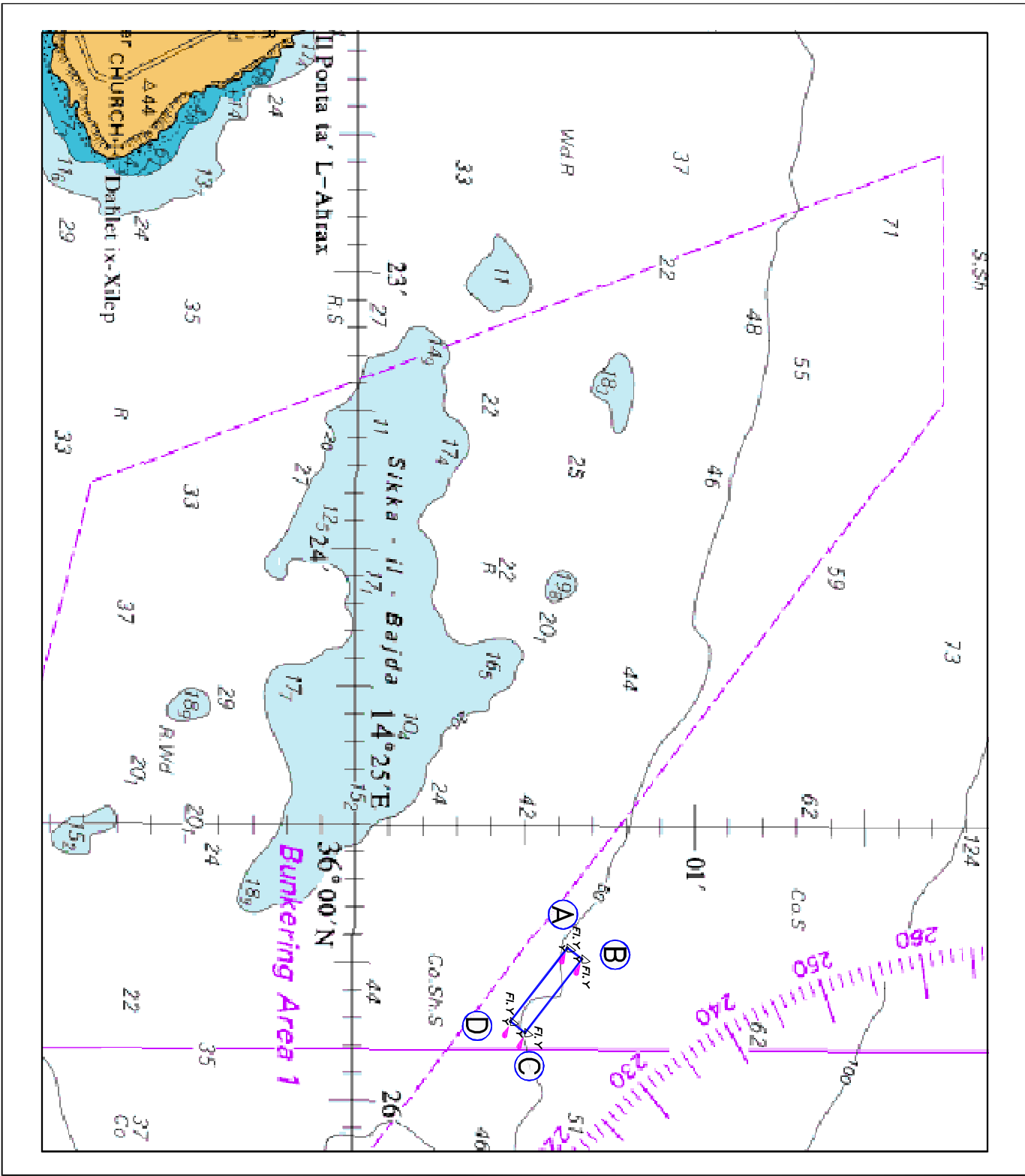
The Ports and Yachting Directorate, Transport Malta, notifies mariners that in the section "**North East of Malta**", where it is stated that "A temporary fish farm is being established in the following position", this is being amended to read "A fish farm has been established for a period of 1 (one) year in the following position:

Position	Latitude (N)	Longitude (E)	Flashing
A	36° 00'.630	014° 25'.432	Fl.Y
B	36° 00'.673	014° 25'.472	Fl.Y
C	36° 00'.507	014° 25'.740	Fl.Y
D	36° 00'.464	014° 25'.700	Fl.Y

Notice to Mariners No 02 of 2017 is to be amended accordingly.

All other information mentioned in Notice to Mariners No. 33 of 2017 will remain.

Chart affected: BA 2538, 2537, 194, 2123, 2124 and Int. 4301



©British Crown Copyright 1970, 1983, 1986, 1988, 1989, 1999, 2000.  
 All rights reserved  
 The UK Hydrographic Office makes the accompanying data available to Transport Malta under the terms and conditions of agreement HD 1427/080930/01.  
**DISCLAIMER**  
 While the UK Hydrographic Office has endeavoured to ensure that the material supplied is suitable for the purposes described, it accepts no liability for the maximum extent permitted by law for any damage or loss of any nature arising from its use. The material supplied is used entirely at the Recipient's own risk.