



PORTS AND YACHTING DIRECTORATE

Transport Malta

LOCAL NOTICE TO MARINERS NO 32 of 2013

Malta Transport Centre
Marsa, MRS 1917
Malta

Our Ref: TM/PYD/63/95 Vol VI

Tel: (356) 2122 2203
Fax: (356) 2125 0365
Email: info.tm@transport.gov.mt

www.transport.gov.mt

31 May 2013

Research Activities in Marsaxlokk Harbour

The Ports and Yachting Directorate, Transport Malta notifies mariners that research activities will be carried out in different locations in Marsaxlokk Harbour in the areas indicated below between **25 June 2013** and **28 June 2013**.

Position	Latitude (N)	Longitude (E)
A	35° 49'.389	14° 32'.775
B	35° 49'.448	14° 32'.268
C	35° 49'.484	14° 31'.954
D	35° 49'.497	14° 32'.795
E	35° 49'.605	14° 32'.619
F	35° 49'.858	14° 32'.218
G	35° 49'.256	14° 33'.185
H	35° 49'.601	14° 33'.110
I	35° 49'.988	14° 33'.029
X	35° 49'.517	14° 32'.053

The work boat "August Rush" will be collecting seabed samples by means of a grab. The work boat will be stationary during the sampling period.

Samples by divers will be collected at the head of the 31st March Installation at point X. The Work boat will display the international code of Signals flag "A"

Masters and operators of vessels are advised to keep a sharp lookout, navigate with caution and slow speed and give the above positions a wide berth of at least 100m They are to comply with instructions given by Marsaxlokk Port Control (VTS) on VHF Channel 14.

Chart affected: BA 36

Positions referred to WGS 84 DATUM.

to Chart Datum, which
Astronomical Tide. The

Level.
Geodetic System (1984)
POSITIONS note).
me Buoyage System

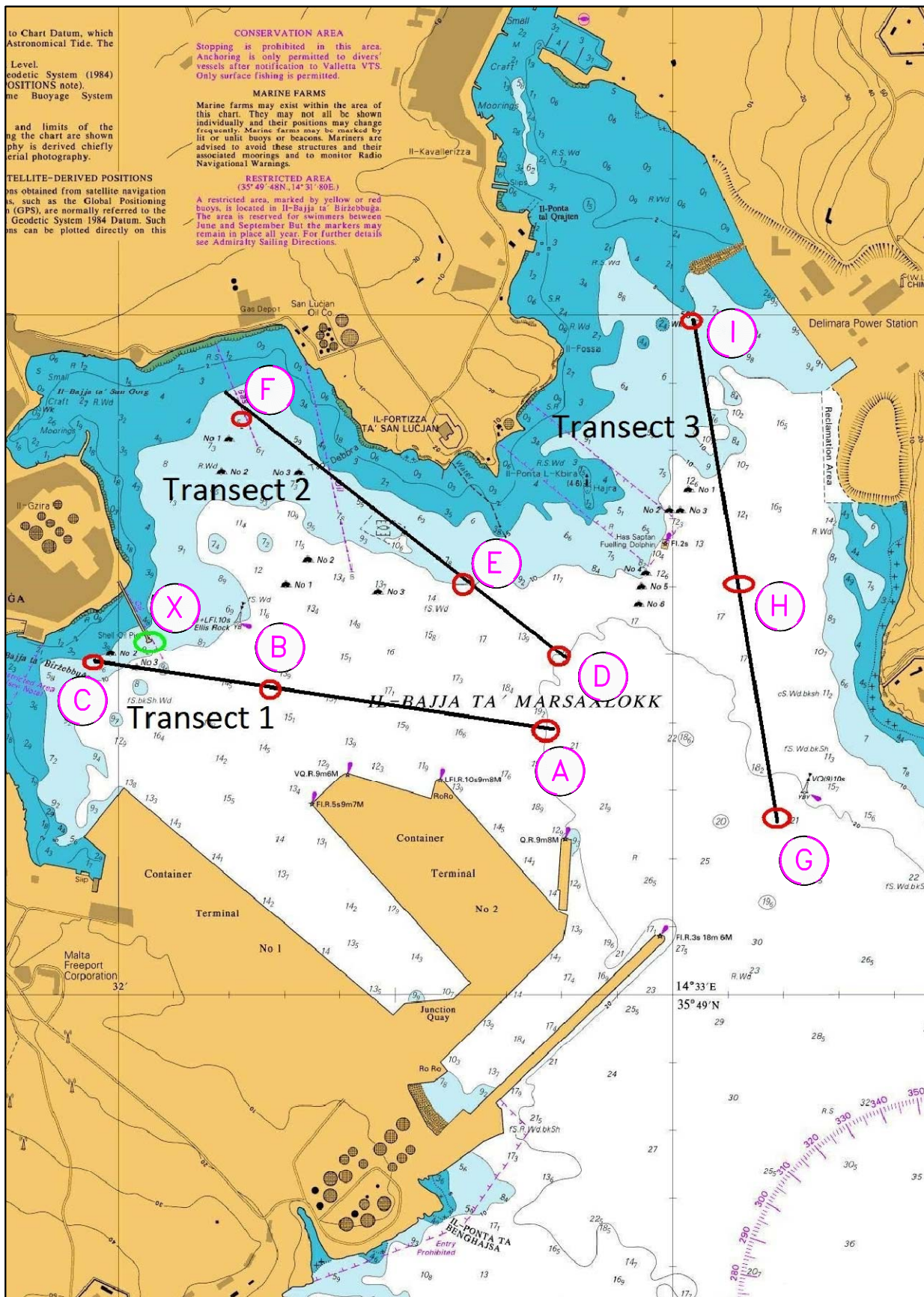
and limits of the
ing the chart are shown
phy is derived chiefly
erial photography.

TELLITE-DERIVED POSITIONS
ons obtained from satellite navigation
s, such as the Global Positioning
n (GPS), are normally referred to the
Geodetic System 1984 Datum. Such
ms can be plotted directly on this

CONSERVATION AREA
Stopping is prohibited in this area.
Anchoring is only permitted to divers.
Vessels after notification to Valletta VTS.
Only surface fishing is permitted.

MARINE FARMS
Marine farms may exist within the area of
this chart. They may not all be shown
individually and their positions may change
frequently. Marine farms may be marked by
lit or unlit buoys or beacons. Mariners are
advised to avoid these structures and their
associated moorings and to monitor Radio
Navigational Warnings.

RESTRICTED AREA
(35° 49' 48N, 14° 31' 80E.)
A restricted area, marked by yellow or red
buoys, is located in Il-Bajja ta' Birzobbuqa.
The area is reserved for swimmers between
June and September. But the markers may
remain in place all year. For further details
see Admiralty Sailing Directions.



British Crown Copyright 1970, 1983, 1986, 1988, 1999, 2000.

The UK Hydrographic Office makes the accompanying data
available to Transport Malta under the terms and
conditions of agreement HD 1427/020930/01.

Whilst the UK Hydrographic Office has endeavoured to ensure
that the material supplied is suitable for the purpose described,
it accepts no liability (to the maximum extent permitted by law)
for any damage or loss of any nature arising from its use.
The material supplied is used entirely at the Recipient's own risk.