



PORTS AND YACHTING DIRECTORATE

Transport Malta

NOTICE TO MARINERS NO 29 of 2015

Our Ref: TM/PYD/129/05

04 November 2015

Malta Transport Centre
Marsa, MRS 1917
Malta

Tel: (356) 2122 2203
Fax: (356) 2125 0365
Email: info.tm@transport.gov.mt

www.transport.gov.mt

CHOGM 2015

Maritime Exclusion Zones between 24 and 30 November 2015

The Ports and Yachting Directorate, Transport Malta notifies all mariners that the Commonwealth Heads of Government Meeting (CHOGM) will be held in Malta between Wednesday 25 November 2015 and Sunday 29 November 2015.

The Government of Malta notifies that for the duration of the event, Maritime Restricted Zones (MRZs) and Maritime Exclusion Zones (MEZs) have been established.

The MRZS and MEZs are delineated by imaginary lines and the coastline.

Maritime Restriction Zones (MRZs)

Mariners are informed that activities and navigation may be restricted in designated MRZs. Vessels operating in MRZs are to ensure constant watch on VHF CH16 and comply with any instructions issued by AFM, Police, TM enforcement vessels, Valletta Port Control (Valletta VTS) and any UK Royal Navy units authorised to operate in such areas.

Zone 1 Pembroke Ranges – Tigne Point

From 25 November 2015 at 0800 hours to 29 November 2015 at 1800 hours

Point	Latitude (N)	Longitude (E)
A	35° 54' .41	14° 30' .92
B	35° 55' .98	14° 32' .72
C	35° 57' .90	14° 30' .29
D	35° 56' .20	14° 28' .37

In order to facilitate the departure and entry of small craft from St Julians Bay and Portomaso Marina, an imaginary corridor of 1.5 cables in width will be adopted. The co-ordinates of the imaginary corridor are as follows:

Point	Latitude (N)	Longitude (E)
E	35° 55' .26	14° 29' .73
F	35° 55' .20	14° 29' .96
G	35° 56' .71	14° 31' .79
H	35° 56' .81	14° 31' .66



Craft will only be allowed to navigate within the above-mentioned corridor after having contacted the patrol craft in the area (on VHF Channel 16) for permission. **No craft will be allowed to transit parallel to the coast or outside the above corridor.**

Zone 2 Ras il-Qammieh to Ras ir-Raheb

From Tuesday 24 November 2015 at 0700 hours to Monday 30 November 2015 at 1800 hours.

Point	Latitude (N)	Longitude (E)
I	35° 54' .40	14° 19' .71
J	35° 54' .40	14° 15' .00
K	35° 58' .30	14° 15' .00
L	35° 58' .30	14° 19' .18

No craft whatsoever will be allowed inside the above area.

Zone 3 Tigne Point to South East of Ras il-Gebel including Valletta and Marsamxetto Harbours

Friday 27 November 2015 from 0700 hours to 1500 hours and on Sunday 29 November 2015 from 0700 hours to 1800 hours.

Point	Latitude (N)	Longitude (E)
A	35° 54' .41	14° 30' .92
B	35° 55' .98	14° 32' .72
M	35° 54' .55	14° 34' .55
N	35° 52' .83	14° 33' .64

Only authorised vessels will be allowed to navigate in the above area

Maritime Exclusion Zones (MEZs) [Areas hatched in black on attached chart]

Mariners are informed that no navigation in or transit within the MEZs will be permitted when these zones are active as indicated in the dates and times below. **The Armed Forces of Malta patrol vessels are authorised to use force in cases of non-compliance.**

Zone 1a Valletta Harbour and Approaches

**Friday 27 November 2015 from 0700 hrs to 1500 hrs
Saturday 28 November 2015 from 0700 hrs to 1800 hrs**

The area is a sector of radius one (1) Nautical Mile centred on point V, to point O then an arch to point P, along the coast to point Q, to an imaginary line to point R then along the coast to point V (St Elmo Fort)



Transport Malta

Point	Latitude (N)	Longitude (E)
V	35° 54' .200	14° 31' .200 (Shore)
O	35° 55' .100	14° 31' .200 (Shore)
P	35° 53' .600	14° 32' .200
Q	35° 53' .159	14° 30' .633
R	35° 53' .319	14° 30' .465

Zone 2a Hagar Qim – Opposite Ras il-Hamrija

Saturday 28 November 2015 from 1600 hrs to 2400 hrs

The area between the imaginary line joining the points **X**, **Y (Filfla)**, and **Z**

POSITIONS	LATITUDE (N)	LONGITUDE (E)
X	35° 49'.190	14° 26'.943 (Shore)
Y	Filfla	
Z	35° 49'.574	14° 25'.711 (Shore)

Zone 3a Radisson Golden Sands (inside MRZ 2)

From Tuesday 24 November 2015 to Monday 30 November 2015

The area between the imaginary line joining the points **Il**, **Jl**, **Kl** and **Ll**

POSITIONS	LATITUDE (N)	LONGITUDE (E)
Il	35° 56'.500	14° 19'.700 (Shore)
Jl	35° 56'.500	14° 18'.500
Kl	35° 55'.700	14° 18'.500
Ll	35° 55'.700	14° 20'.400 (Shore)

Zone 4a Between Malta and Gozo – Passage restricted

Saturday 28 November 2015 from 0800 hrs to 1100 hrs and from 1600 hrs to 1800 hrs

The whole area between the imaginary line **R** to **S** and the imaginary line **T** to **U**

POSITIONS	LATITUDE (N)	LONGITUDE (E)
R	35° 58'.717	14° 19'.599 (Shore)
S	36° 01'.168	14° 17'.506 (Shore)
T	36° 01'.604	14° 18'.755 (Shore)
U	35° 59'.242	14° 20'.770 (Shore)



Transport Malta

Territorial Seas

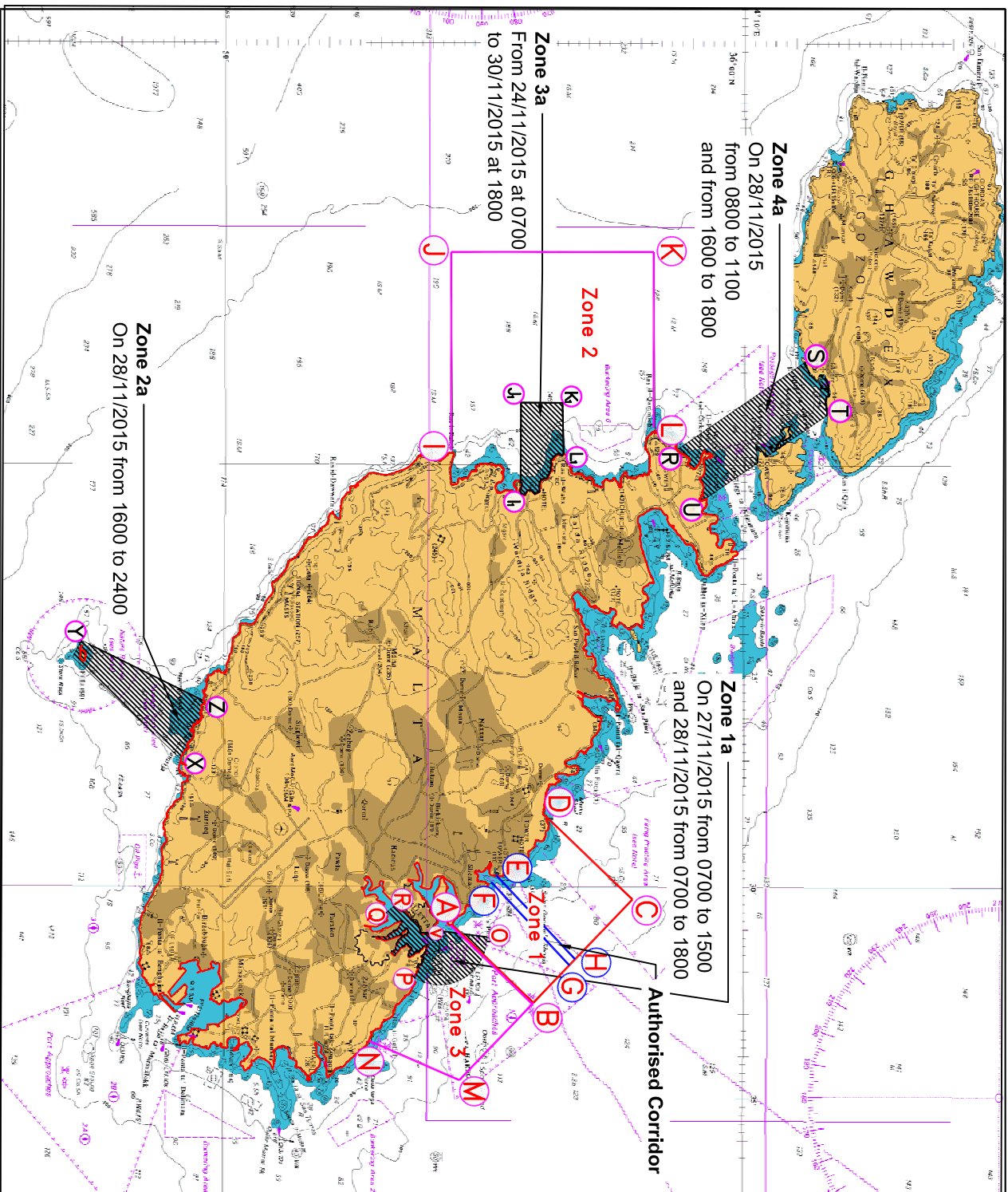
Mariners are informed that security forces will be operating throughout the full extent of Maltese Territorial Seas. Any vessel may be approached and subjected to a verbal challenge to which they are obliged to respond.

Mariners are instructed to comply with any instructions given by Valletta Port Control (Valletta VTS), The Armed Forces of Malta patrol vessels, T.M. enforcement vessels and UK Royal Navy vessels authorised to operate in such areas. Force may be used by the crew of the patrol vessels in cases of non-compliance. **Only authorised vessels will be allowed to transit or enter the restricted zones mentioned above.**

Part of BA chart 194 attached

Charts affected: BA 177, 194, 211, 2537, 2538

All positions are referred to WGS 84 DATUM.



© British Crown Copyright 1970, 1983, 1986, 1988, 1989, 2000.
All rights reserved

The UK Hydrographic Office makes the accompanying data available to Transport Malta under the terms and conditions of agreement HO 1427/020930/01.

DISCLAIMER

Whilst the UK Hydrographic Office has endeavored to ensure that the material supplied is suitable for the purpose described, it accepts no liability (to the maximum extent permitted by law) for any damage or loss of any nature arising from its use. The material supplied is used entirely at the Recipient's own risk.