



PORTS AND YACHTING DIRECTORATE

Transport Malta

## LOCAL NOTICE TO MARINERS NO 26 of 2016

Our Ref: 83/97 Vol. VIII

25 May 2016

Malta Transport Centre  
Marsa, MRS 1917  
Malta

Tel: (356) 2122 2203  
Fax: (356) 2125 0365  
Email: [info.tm@transport.gov.mt](mailto:info.tm@transport.gov.mt)

[www.transport.gov.mt](http://www.transport.gov.mt)

### Valletta Pageant of the Seas – 2016

The Ports and Yachting Directorate, Transport Malta, notifies mariners that the “Valletta Pageant of the Seas” event will be held in the Grand Harbour on Tuesday, 7 June 2016, with a rehearsal being held on Monday, 6 June 2016.

The Valletta Pageant of the Seas event will include the use of barges, lit buoys, pontoons, power boats, sailing yachts and fireworks display. The closure of the Grand Harbour will also come into effect on the dates noted below.

Schedule of the preparation works and event are as follows:

**Saturday 4 June 2016 and Sunday 5 June 2016**, buoys with flashing lights will be laid in positions **A, B, C, D, E, F, G, H** and **I**, as shown on attached Chart 1.

POSITION	LATITUDE (N)	LONGITUDE (E)
A	35°53'.527	14°30'.810
B	35°53'.542	14°30'.838
C	35°53'.490	14°30'.914
D	35°53'.504	14°30'.942
E	35°53'.590	14°30'.935
F	35°53'.576	14°30'.906
G	35°53'.568	14°30'.903
H	35°53'.540	14°30'.850
I	35°53'.602	14°30'.827

Mariners are advised to navigate with caution in these areas.

### Monday 6 June 2016

A rehearsal will be held on this day; therefore, part of the Grand Harbour will be closed to all vessels as shown on the attached Chart 2, from 1700 hrs until 2300 hrs, except to those vessels with prior authorisation.

Imaginary lines bind the restricted area between the points **J - K, L - M, N - O, P - Q, R - S, T - U** and **V - W** as shown on the attached chart 2.



**Transport Malta**

Malta Transport Centre  
Marsa, MRS 1917  
Malta

Tel: (356) 2122 2203  
Fax: (356) 2125 0365  
Email: [info.tm@transport.gov.mt](mailto:info.tm@transport.gov.mt)

[www.transport.gov.mt](http://www.transport.gov.mt)

**Tuesday 7 June 2016**, the actual event.

The Grand Harbour will be closed to all vessels, as shown on attached Chart 2 from 1700 hrs until 2200 hrs.

Imaginary lines bind the restricted area between the points **J - K**, **L - M**, **N - O**, **P - Q**, **R - S**, **T - U** and **V - W** as shown on the attached chart 2.

No vessels will be allowed to stay south west of the imaginary line **V - W** unless authorised and berthed alongside any available quays.

The approaches to the fairway between the breakwaters, is to be kept clear during these hours.

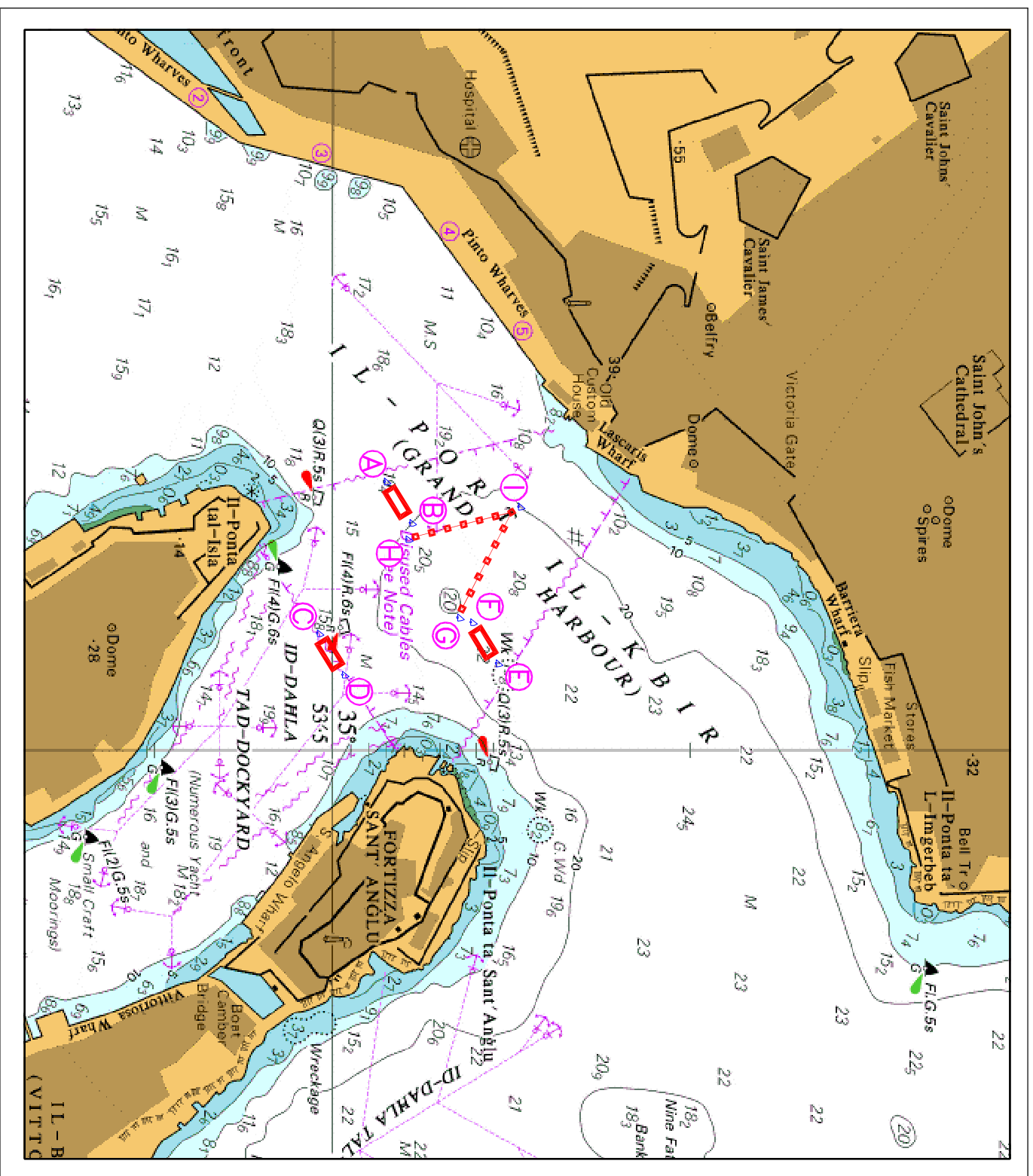
During the event, shipping movements in the Grand Harbour will be restricted. No vessel will be allowed within the restricted area. Authorised vessels are to give the barges and pontoons a wide berth of at least 100m at all times.

Mariners are to comply with instructions and directions issued by Valletta Port Control (Valletta VTS) on VHF Channel 12, Police, Armed Forces of Malta and Transport Malta Enforcement that will be in the area.

The Ports and Yachting Directorate, Transport Malta, will not be held responsible or liable in any manner whatsoever for any damages or expenses incurred by any person as a consequence of these fireworks' displays, including for failing to abide and comply with the above directions.

Any vessels and moorings that are left in this area after the stipulated date will be removed. No liability whatsoever will be accepted by the authority for any damage that may be caused while removing the said vessels and moorings.

Chart Affected:      **BA 177**

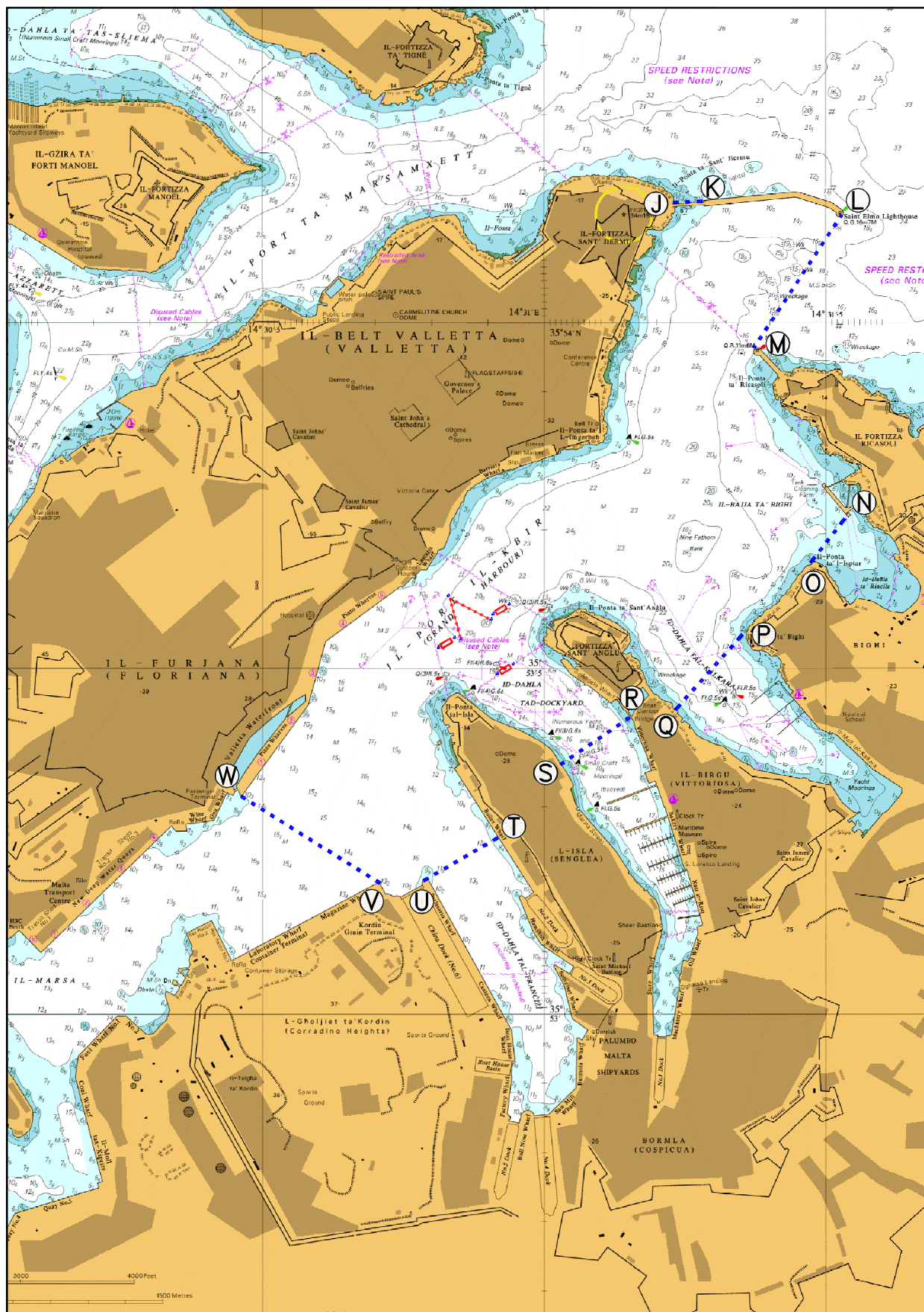


©British Crown Copyright 1970, 1983, 1986, 1988, 1999, 2000.  
All rights reserved

The UK Hydrographic Office makes the accompanying data available to Transport Malta under the terms and conditions of agreement HD 1427/020930/01.

**DISCLAIMER**

Whilst the UK Hydrographic Office has endeavoured to ensure that the material supplied is suitable for the purpose described, it accepts no liability (to the maximum extent permitted by law) for any damage or loss of any nature arising from its use. The material supplied is used entirely at the Recipient's own risk.



©British Crown Copyright 1970, 1983, 1986, 1988, 1999, 2000.  
All rights reserved

The UK Hydrographic Office makes the accompanying data  
available to Transport Malta under the terms and  
conditions of agreement HD 1427/020930/01.

#### DISCLAIMER

Whilst the UK Hydrographic Office has endeavoured to ensure  
that the material supplied is suitable for the purpose described,  
it accepts no liability (to the maximum extent permitted by law)  
for any damage or loss of any nature arising from its use.  
The material supplied is used entirely at the Recipient's own risk.

Chart 2