



**Transport Malta**

Malta Transport Centre  
Marsa, MRS 1917  
Malta

Tel: (356) 2122 2203  
Fax: (356) 2125 0365  
Email: [info.tm@transport.gov.mt](mailto:info.tm@transport.gov.mt)

[www.transport.gov.mt](http://www.transport.gov.mt)

PORTS AND YACHTING DIRECTORATE

## NOTICE TO MARINERS No 26 of 2014

Our Ref: **TM/PYD/ 128/93 Vol III**

**16 October 2014**

### Malta East Coast – Extension of Fish Farm

**Il-Hofra z-Zghira North East off Marsaxlokk Harbour**

***Refer to Chart 2538 and 194***

Amend boundary of fish farm to the following positions:

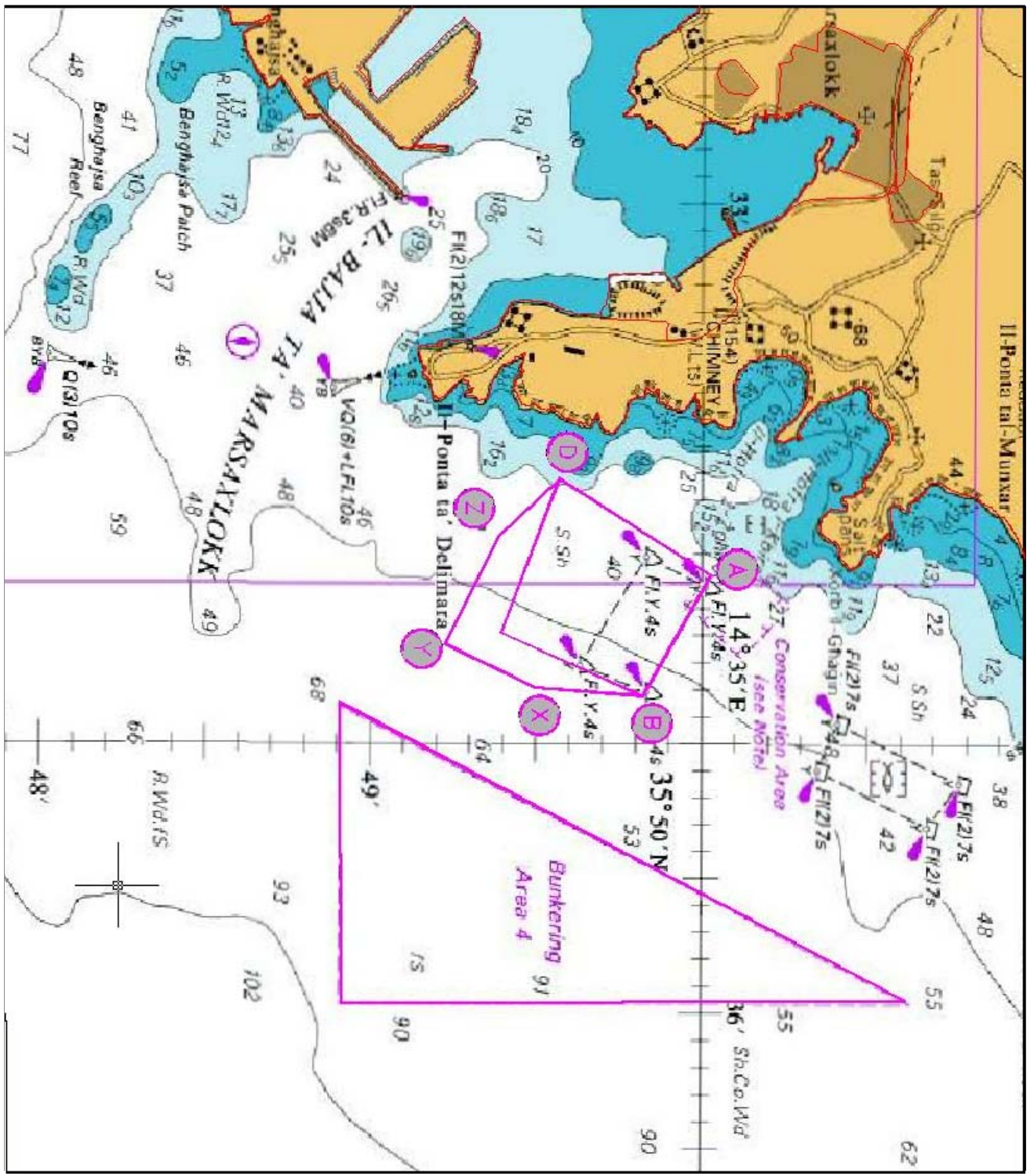
	<u>Latitude (N)</u>	<u>Longitude (E)</u>	
<b>A</b>	<b>35° 50'. 021</b>	<b>14° 34'.385</b>	<b>Existing</b>
<b>B</b>	<b>35° 49'. 830</b>	<b>14° 34'.808</b>	<b>Existing</b>
<b>X</b>	<b>35° 49'. 509</b>	<b>14° 34'.806</b>	<b>New</b>
<b>Y</b>	<b>35° 49'. 235</b>	<b>14° 34'.652</b>	<b>New</b>
<b>Z</b>	<b>35° 49'. 393</b>	<b>14° 34'.245</b>	<b>New</b>
<b>D</b>	<b>35° 49'. 570</b>	<b>14° 34'.030</b>	<b>Existing</b>

Insert conical light buoys 2 metres high with special marks for day markers and flashing yellow, range of light is one (1) Nautical Mile in position X, Y and Z above.

Mariners are to note the above extension and give a wide berth.

Position in WGS 84 Datum.

Chart Affected: BA Chart 36, 2538, 194



British Crown Copyright 1970, 1983, 1986, 1988, 1999, 2000.  
All rights reserved.

The UK Hydrographic Office makes the accompanying data available to Transport Malta under the terms and conditions of agreement HD 1427/080930/01.

**DISCLAIMER**

Whilst the UK Hydrographic Office has endeavoured to ensure that the material supplied is suitable for the purpose described, it accepts no liability (to the maximum extent permitted by law) for any damage or loss of any nature arising from its use. The material supplied is used entirely at the Recipient's own risk.