



PORTS AND YACHTING DIRECTORATE

Transport Malta

NOTICE TO MARINERS No 19 of 2015

Our Ref: **TM/PYD/0029/15**

1 June 2015

Malta Transport Centre
Marsa, MRS 1917
Malta

Tel: (356) 2122 2203
Fax: (356) 2125 0365
Email: info.tm@transport.gov.mt

www.transport.gov.mt

Works in Progress at Delimara – Marsaxlokk Harbour.

The Ports and Yachting Directorate, Transport Malta, notifies mariners that work in the area bounded by the imaginary line connecting the points **A, B, C, D** and **E** and the intermediate coastline is scheduled to start with immediate effect and will continue until further notice.

POINT	LATITUDE (N)	LONGITUDE (E)
A	35° 49'.766	14° 33'.297
B	35° 49'.767	14° 33'.227
C	35° 49'.503	14° 33'.221
D	35° 49'.433	14° 33'.279
E	35° 49'.432	14° 33'.377

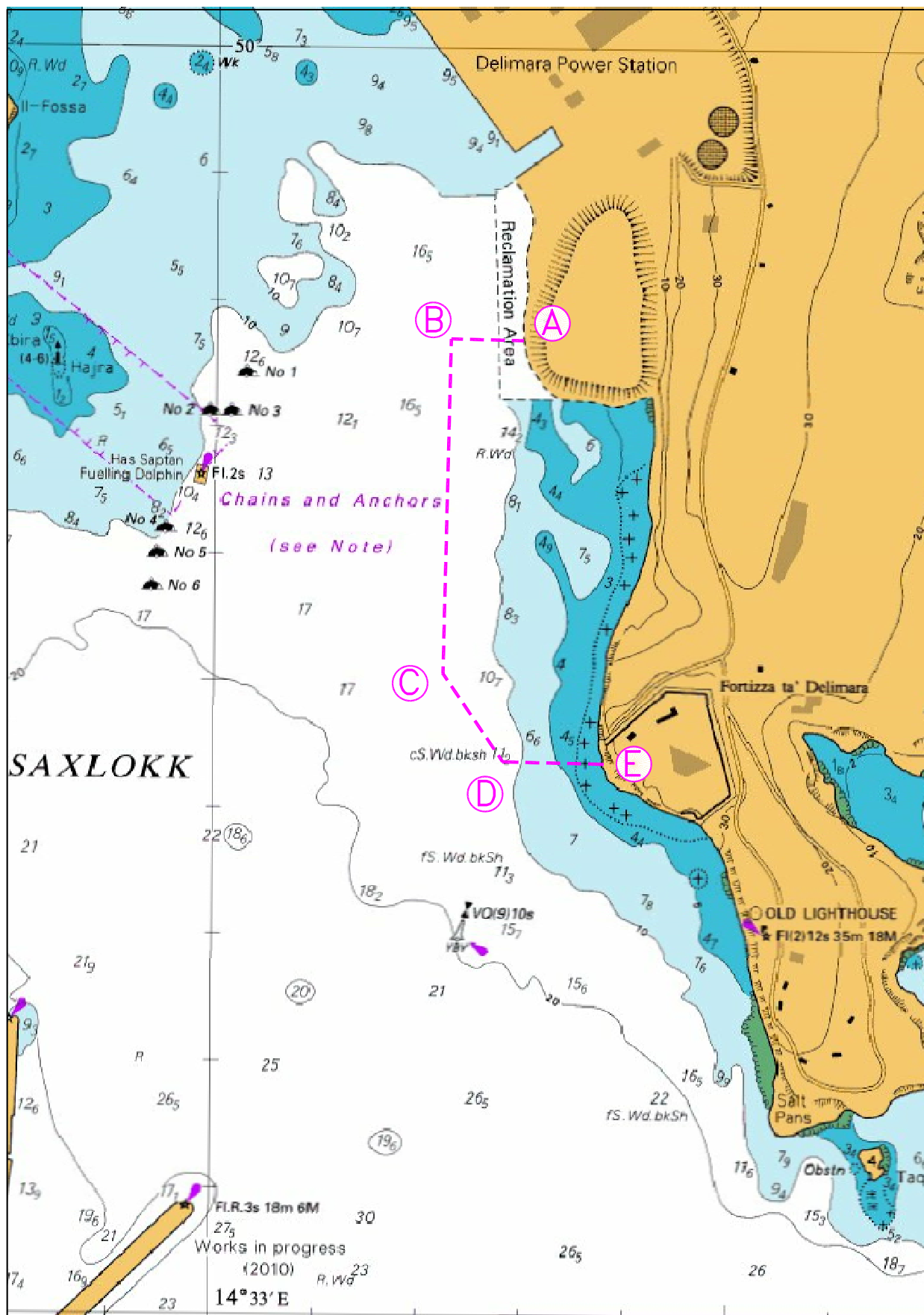
Part of chart attached for reference

The vessels involved in the work are self-elevating unit (jack up) **IGNATIOS V**, tugboat **CHRISTOS XXI** and a tender tugboat

In view of the above mariners, recreational crafts, fishing boat, local sailing clubs and any unauthorized vessels are to navigate with caution and very slow 'no wake' speed. They are to give the above area a wide berth and obey instructions as given by the Marsaxlokk Port Control (VTS) on VHF Channel 14

Chart affected: BA 36

Positions referred to WGS 84 DATUM.



©British Crown Copyright 1970, 1983, 1986, 1988, 1999, 2000.
All rights reserved

The UK Hydrographic Office makes the accompanying data available to Transport Malta under the terms and conditions of agreement HD 1427/020930/01.

DISCLAIMER

Whilst the UK Hydrographic Office has endeavoured to ensure that the material supplied is suitable for the purpose described, it accepts no liability (to the maximum extent permitted by law) for any damage or loss of any nature arising from its use. The material supplied is used entirely at the Recipient's own risk.