



**Transport Malta**

Malta Transport Centre  
Marsa, MRS 1917  
Malta

Tel: (356) 2122 2203  
Fax: (356) 2125 0365  
Email: [info.tm@transport.gov.mt](mailto:info.tm@transport.gov.mt)

[www.transport.gov.mt](http://www.transport.gov.mt)

PORTS AND YACHTING DIRECTORATE

## NOTICE TO MARINERS No 17 OF 2014

Our Ref: MT/PYD/299/81 Vol XII

24 June 2014

### **No Anchoring off Ta' Xbiex Coast in Marsamxett Harbour.**

Reference is made to BA Chart 177

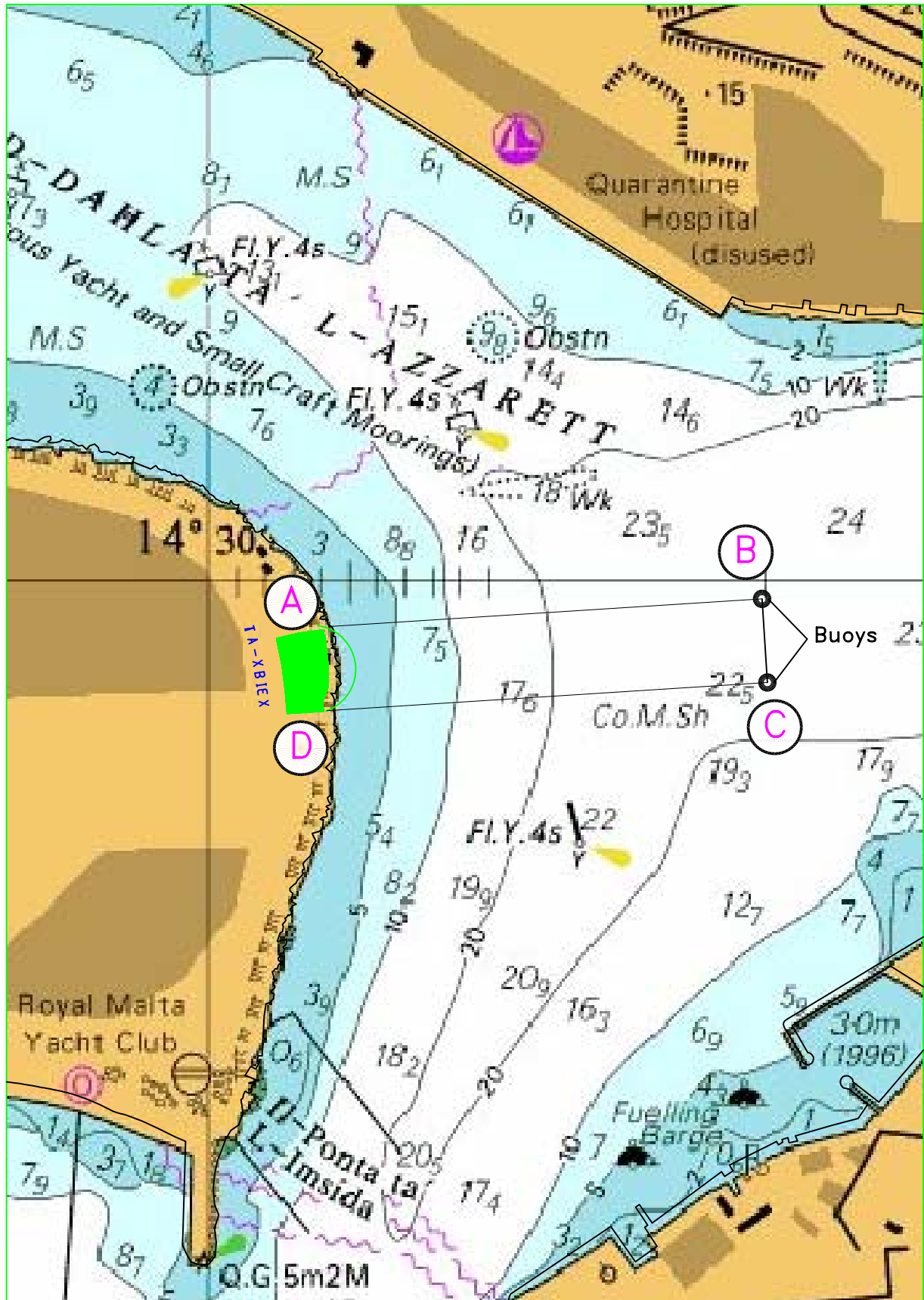
The Ports and Yachting Directorate, Transport Malta notifies Mariners that two storm water discharge pipes will be installed at ta' Xbiex and going out at sea for 200m and as shown on attached chart. In view of the above a no anchoring area has been established bound by the following positions:

<b>POINT</b>	<b><i>Latitude (N)</i></b>	<b><i>Longitude (E)</i></b>
A.	035° 53'.985	014° 30'.041
B.	035° 53'.994	014° 30'.198
C.	035° 53'.970	014° 30'.200
D.	035° 53'.961	014° 30'.041

Two yellow marker buoys flashing yellow have been placed at points 2 and 3 above to mark the outer boundary.

Mariners are instructed not to anchor in the area mentioned above and to navigate with caution and slow speed when in the vicinity.

Charts Affected: BA 177



British Crown Copyright 1970, 1983, 1986, 1988, 1999, 2000.

The UK Hydrographic Office makes the accompanying data available to Transport Malta under the terms and conditions of agreement HD 1427/020930/01.

Whilst the UK Hydrographic Office has endeavoured to ensure that the material supplied is suitable for the purpose described, it accepts no liability (to the maximum extent permitted by law) for any damage or loss of any nature arising from its use. The material supplied is used entirely at the Recipient's own risk.