



PORTS AND YACHTING DIRECTORATE

**Transport Malta**

**LOCAL NOTICE TO MARINERS NO 14 of 2015**

Malta Transport Centre  
Marsa, MRS 1917  
Malta

Our Ref: TM/PYD/132/89

Tel: (356) 2122 2203  
Fax: (356) 2125 0365  
Email: [info.tm@transport.gov.mt](mailto:info.tm@transport.gov.mt)

6 April 2015

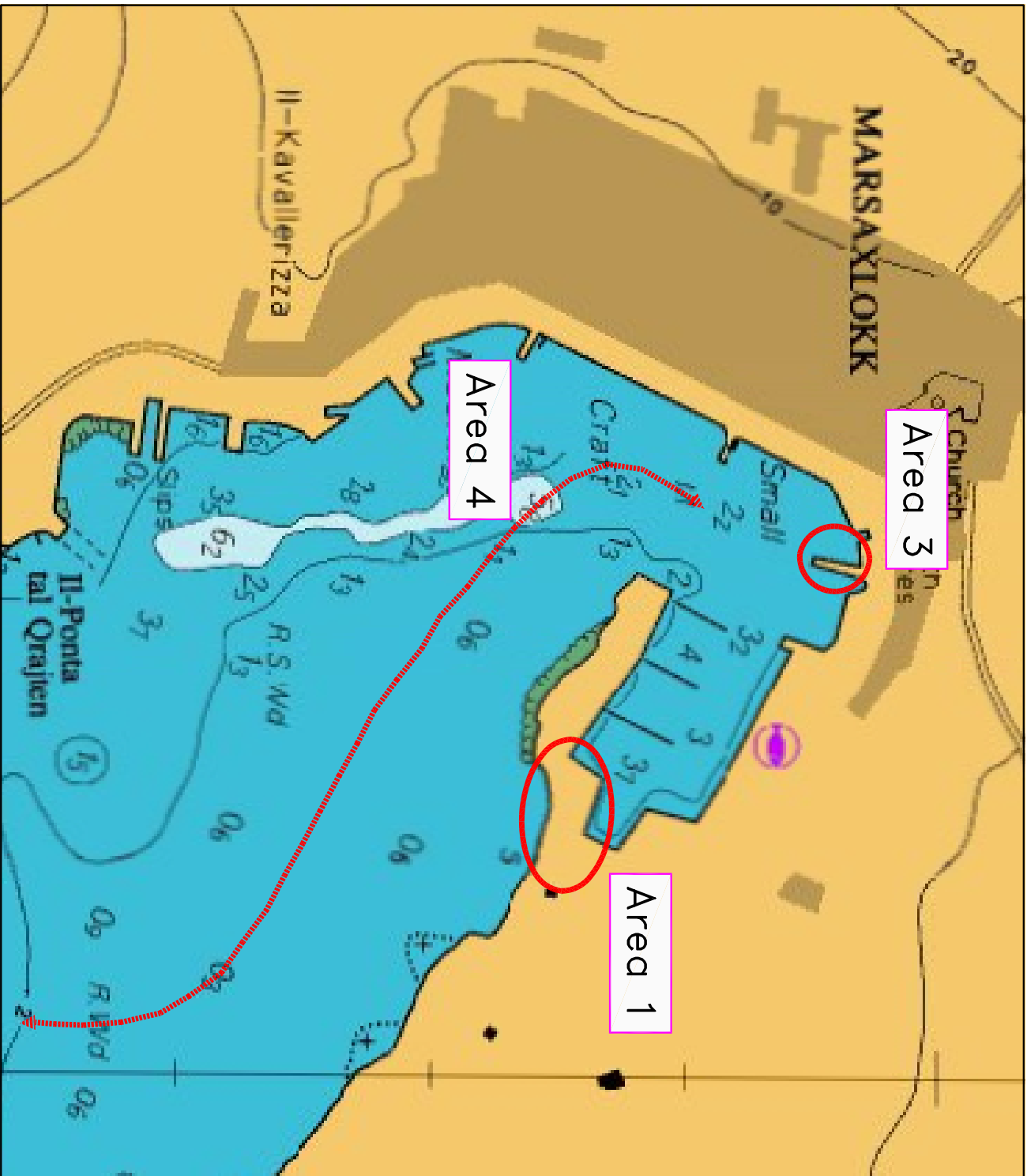
[www.transport.gov.mt](http://www.transport.gov.mt)

**Filming at “il-Bajja ta’ Marsaxlokk,” Malta**

The Ports and Yachting Directorate, Transport Malta notifies all mariners, owners of vessels and bathers, that filming activities will take place at “il-Bajja ta’ Marsaxlokk,” in Areas 1, 3 and 4 as shown on attached charts A and Area 2 as shown on attached Chart B, between Tuesday 14 April 2015 and Thursday 16 April 2015 both days included.

In view of the above Mariners, owners of vessels and bathers are instructed to cooperate with any instructions given by the film crew and to comply with instructions issued by Marsaxlokk Port Control (Marsaxlokk VTS) and police.

Charts affected: BA 36.



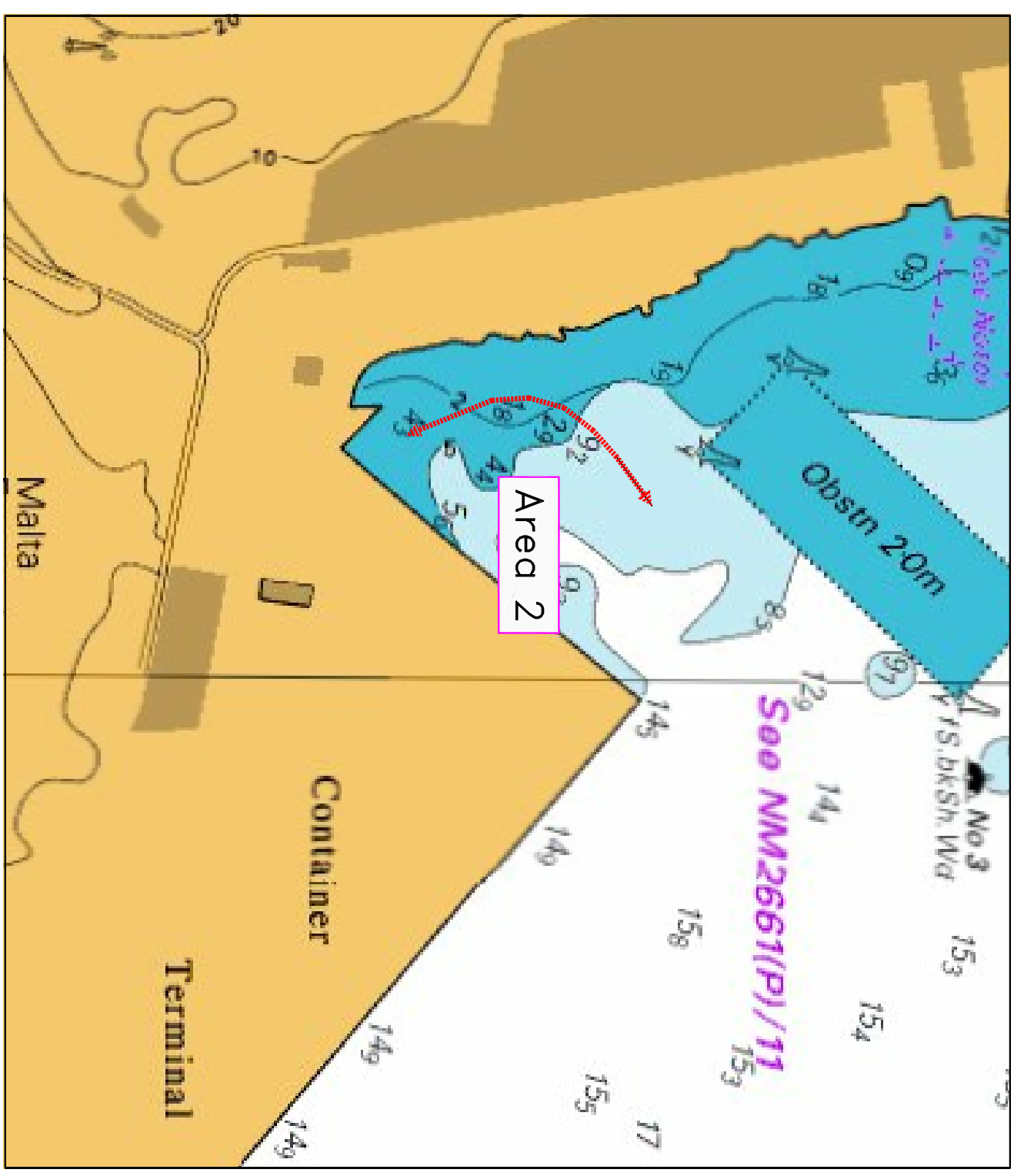
© British Crown Copyright 1970, 1983, 1986, 1988, 1999, 2000. All rights reserved.

The UK Hydrographic Office makes the accompanying data available to Transport Malta under the terms and conditions of agreement HU 142/060930/01.

**DISCLAIMER**

Whilst the UK Hydrographic Office has endeavoured to ensure that the material supplied is suitable for the purpose described, it accepts no liability (to the maximum extent permitted by law) for any damage or loss of any nature arising from its use. The material supplied is used entirely at the Recipient's own risk.

Chart A



©British Crown Copyright 1970, 1983, 1986, 1988, 1999, 2000. All rights reserved

The UK Hydrographic Office makes the accompanying data available to Transport Malta under the terms and conditions of agreement MD 1427/020930/01.

**DISCLAIMER**

Whilst the UK Hydrographic Office has endeavoured to ensure that the material supplied is suitable for the purpose described, it accepts no liability (to the maximum extent permitted by law) for any damage or loss of any nature arising from its use. The material supplied is used entirely at the Recipient's own risk.

Chart B