



Transport Malta

PORTS AND YACHTING DIRECTORATE

NOTICE TO MARINERS NO 12 of 2018

Our Ref: **TM/PYD/ 299/81 Vol XII**

26 January **2018**

Malta Transport Centre
Marsa, MRS 1917
Malta

Tel: (356) 2122 2203
Fax: (356) 2125 0365
Email: info.tm@transport.gov.mt

www.transport.gov.mt

Chart Correction.

Reference is made to BA Chart 36 - Marsaxlokk

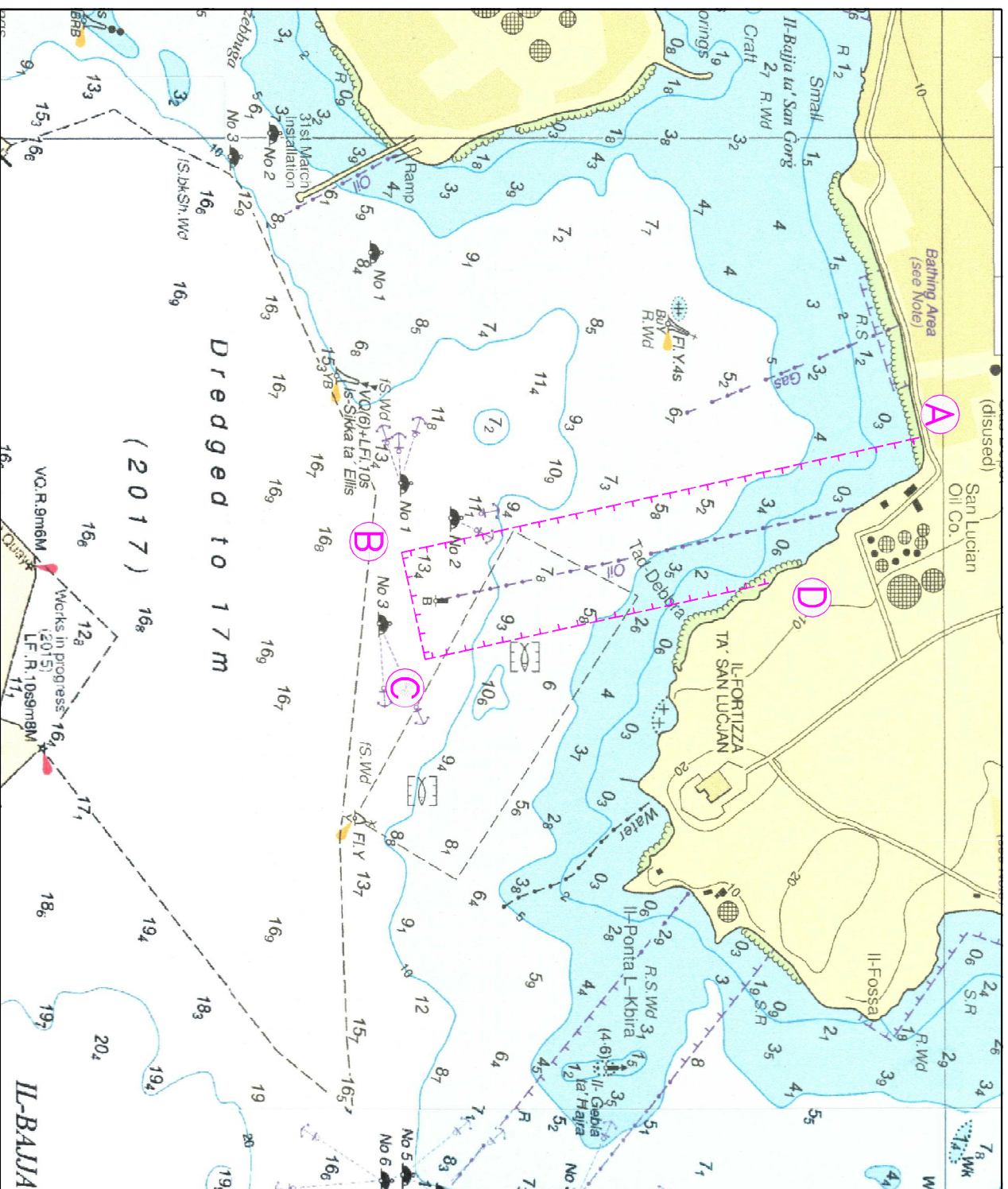
The Ports and Yachting Directorate, Transport Malta notifies Mariners that an area A, B, C and D has been declared as a **No Anchoring** area, as shown on attached chart.

Insert dashed lines, indicating limit of **No Anchoring** area, by joining the following points A to B, B to C and C to D:

Point	Latitude (N)	Longitude (E)
A	35° 49'.978	014° 32'.268
B	35° 49'.595	014° 32'.375
C	35° 49'.613	014° 32'.472
D	35° 49'.867	014° 32'.401

Mariners are instructed not to anchor in the area mentioned above and to navigate with caution and slow speed when in the vicinity.

Charts Affected: BA 36



©British Crown Copyright 1970, 1983, 1986, 1988, 1999, 2000.
All rights reserved

The UK Hydrographic Office makes the accompanying data available to Transport Malta under the terms and conditions of agreement HD 1427/020930/01

DISCLAIMER

While the UK Hydrographic Office has endeavoured to ensure that the material supplied is suitable for the purpose described, it accepts no liability (to the maximum extent permitted by law) for any damage or loss of any nature arising from its use. The material supplied is used entirely at the Recipient's own risk.