



PORTS AND YACHTING DIRECTORATE

Transport Malta

Malta Transport Centre  
Marsa, MRS 1917  
Malta

Tel: (356) 2122 2203  
Fax: (356) 2125 0365  
Email: [info.tm@transport.gov.mt](mailto:info.tm@transport.gov.mt)

[www.transport.gov.mt](http://www.transport.gov.mt)

## NOTICE TO MARINERS NO 11 of 2012

Our Ref: TM/PYD/133/96 Vol IV

6 June 2012

### Construction of Protection Berm in Marsaxlokk Harbour

The Ports and Yachting Directorate, Transport Malta, notifies mariners that further to Notice to Mariners no 110 of 2011, the construction of an underwater slope protection berm involves the placing of material about 2m below the surface.

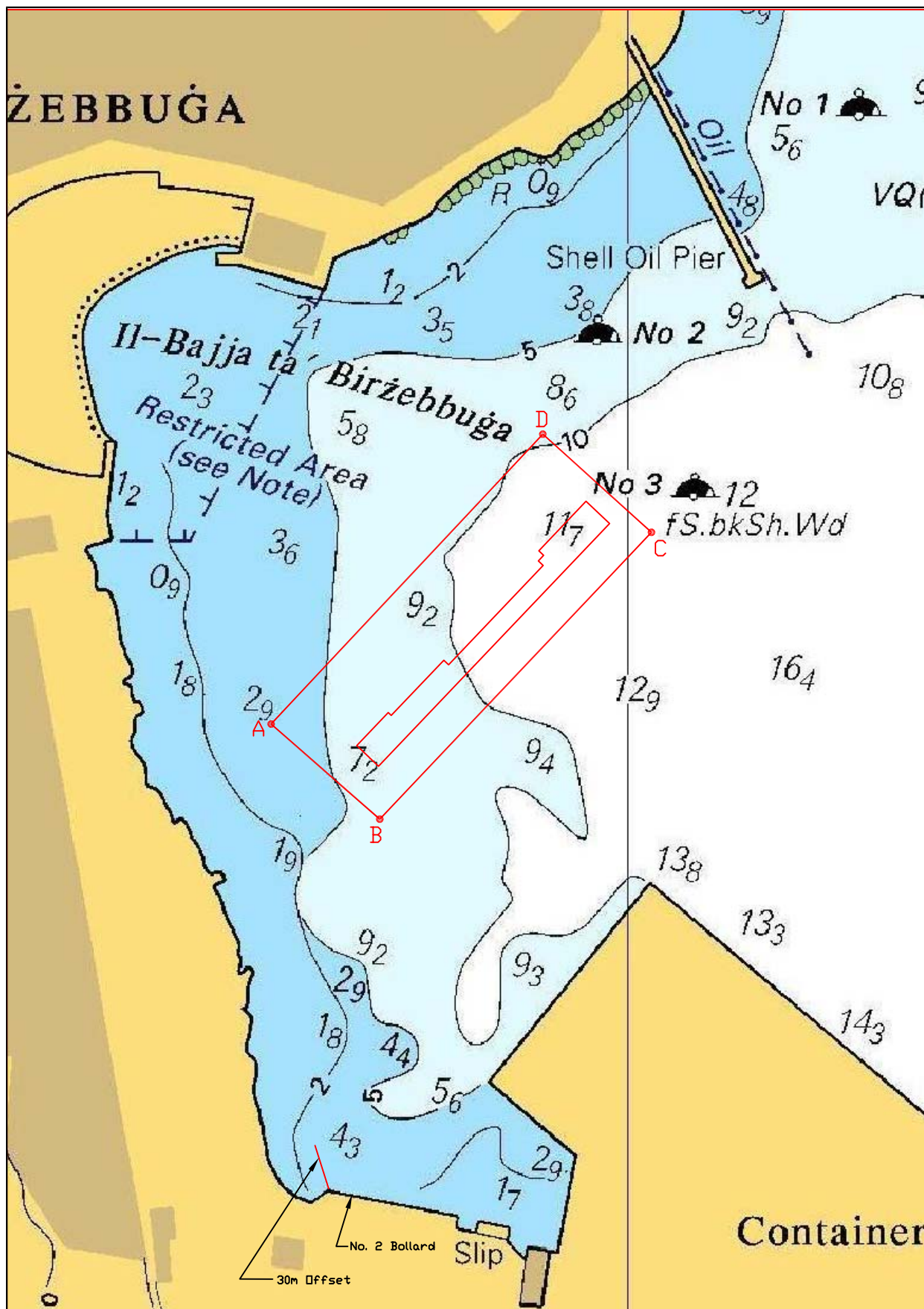
The area is enclosed by the following rectangle

Point	LATITUDE (N)	LONGITUDE (E)
A	35° 49.361	14° 31.840'
B	35° 49.327'	14° 31.888'
C	35° 49.430'	14° 32.007'
D	35° 49.465'	14° 31.959'

Unlit yellow marker buoys delineate this area.

Mariners are therefore informed not to navigate inside the above area and to keep a sharp lookout, navigate with extreme caution and slow speed and give the above area a wide berth of 100m. They are to abide by any instructions that are issued by Marsaxlokk VTS (Marsaxlokk Port Control)

Position is referred to WGS 84 Datum



©British Crown Copyright 1970, 1983, 1986, 1988, 1999, 2000.  
All rights reserved

The UK Hydrographic Office makes the accompanying data  
available to Transport Malta under the terms and  
conditions of agreement HD 1427/020930/01.

#### DISCLAIMER

Whilst the UK Hydrographic Office has endeavoured to ensure  
that the material supplied is suitable for the purpose described,  
it accepts no liability (to the maximum extent permitted by law)  
for any damage or loss of any nature arising from its use.  
The material supplied is used entirely at the Recipient's own risk.