



**Transport Malta**

Malta Transport Centre  
Marsa, MRS 1917  
Malta

Tel: (356) 2122 2203  
Fax: (356) 2125 0365  
Email: [info.tm@transport.gov.mt](mailto:info.tm@transport.gov.mt)

[www.transport.gov.mt](http://www.transport.gov.mt)

**PORTS AND YACHTING DIRECTORATE**

## **LOCAL NOTICE TO MARINERS No 101 of 2017**

Our Ref: TM/PYD/01/17

11 September 2017

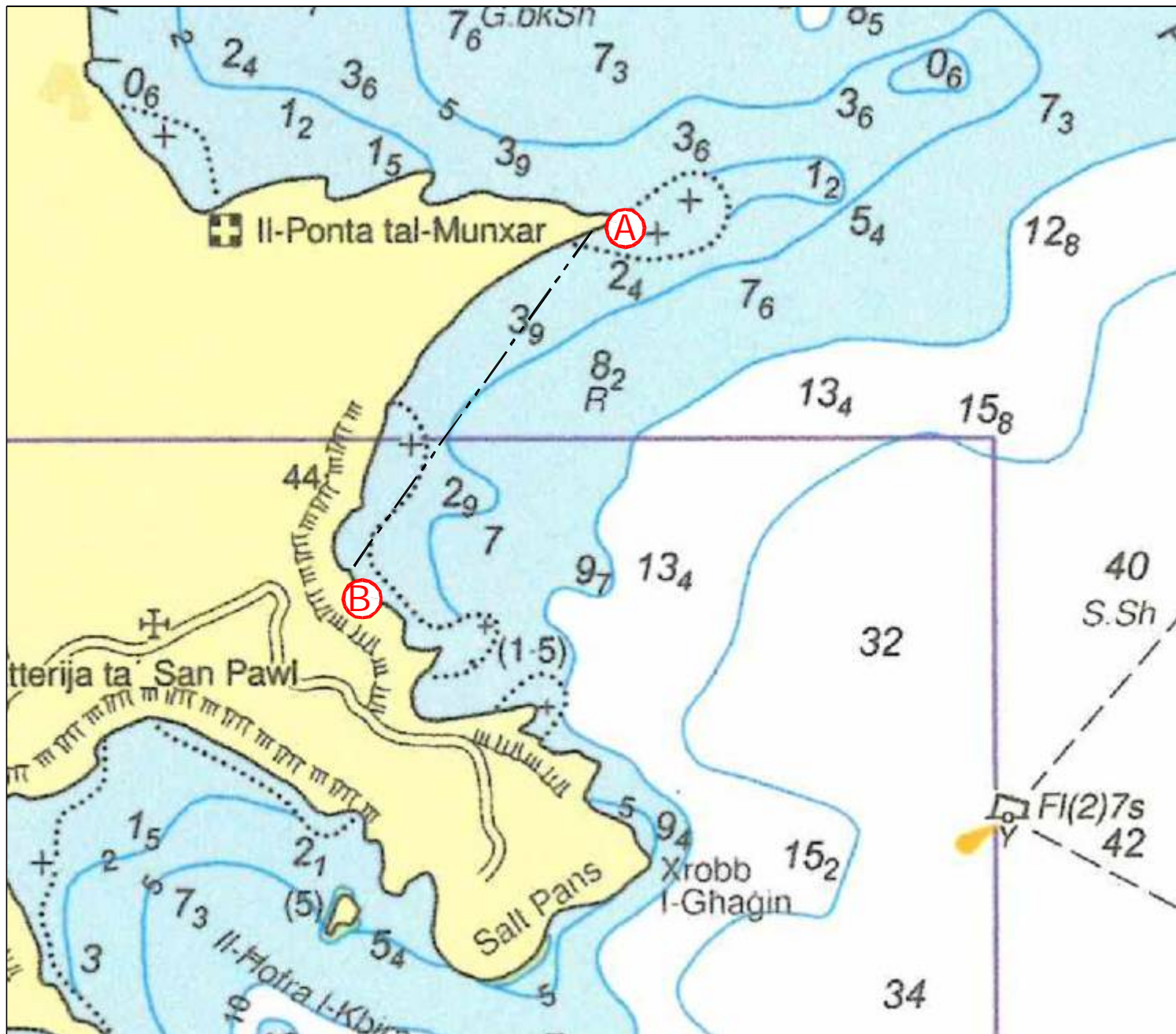
### **Falling Rocks at il-Munxar, Marsascala**

The Ports and Yachting Directorate, Transport Malta, informs mariners of the danger when navigating in very close proximity to the cliffs at il-Munxar limits of Marsascala due to falling rocks in the area bounded by the imaginary line between points A and B.

The stretch of coast on the western side of the imaginary line A and B is to be avoided.

In view of the above Mariners are not to navigate below the cliff face and if this is absolutely required they are to navigate with extreme caution.

Chart affected BA chart 36.



©British Crown Copyright 1970, 1983, 1986, 1988, 1999, 2000.  
All rights reserved

The UK Hydrographic Office makes the accompanying data available to Transport Malta under the terms and conditions of agreement HO 1427/02093/0/01.

**DISCLAIMER**

Whilst the UK Hydrographic Office has endeavoured to ensure that the material supplied is suitable for the purpose described, it accepts no liability (to the maximum extent permitted by law) for any damage or loss of any nature arising from its use. The material supplied is used entirely at the Recipient's own risk.