



PORTS AND YACHTING DIRECTORATE

LOCAL NOTICE TO MARINERS NO 100 of 2017

Our Ref: TM/PYD/131/92

11 September 2017



Transport Malta

Malta Transport Centre
Marsa, MRS 1917
Malta

Tel: (356) 2122 2203
Fax: (356) 2125 0365
Email: info.tm@transport.gov.mt

www.transport.gov.mt

Further to Notice to Mariners No 91 re Malta Air Show - 2017 Maritime Exclusion Zones between 21st and 24th September 2017

The Ports and Yachting Directorate, Transport Malta notifies all mariners that the Malta Air Show - 2017 will be held between Saturday 23rd September 2017 and Sunday 24th September 2017.

The Ports and Yachting Directorate, Transport Malta notifies that a Maritime Exclusion Zone (MEZ) will be established between Thursday 21st September 2017 and Sunday 24th September 2017.

The MEZ is delineated by the imaginary lines between the points **A, B, C, D, E, F, G, H** and **I** and the coastline, shown hatched in red on attached chart 1. Flashing markers, with red flags, will be placed in positions **B, C, D, E, F, G** and **H**.

Point	Latitude (N)	Longitude (E)	
A	35° 53'.854	014° 31'.796	Coast
B	35° 54'.045	014° 31'.967	Flashing Markers
C	35° 54'.231	014° 32'.136	Flashing Markers
D	35° 54'.011	014° 32'.491	Flashing Markers
E	35° 53'.784	014° 32'.861	Flashing Markers
F	35° 53'.554	014° 33'.236	Flashing Markers
G	35° 53'.320	014° 33'.617	Flashing Markers
H	35° 53'.176	014° 33'.479	Flashing Markers
I	35° 53'.032	014° 33'.339	Coast

The MEZ will be in force as follows:

Thursday 21 st September 2017:	from 0800 hrs to 1045 hrs and from 1600 hrs to 1845 hrs
Friday 22 nd September 2017:	from 0945 hrs to 1215 hrs and from 1500 hrs to 1930 hrs
Saturday 23 rd September 2017:	from 1500 hrs to 1950 hrs
Sunday 24 th September 2017:	from 1500 hrs to 1950 hrs.

All Times are local

Mariners are informed that during the above display dates and times, entry and exit from the Grand Harbour will be restricted to navigation.

The section of Barriera Wharf behind the Fish Market, shown hatched in red on attached chart 2, is to be kept clear from Thursday 21st September at 0800 hrs till Sunday 24th September 2017 2000hrs.



Transport Malta

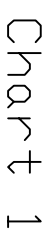
Mariners are instructed to comply with any instructions given by Valletta Port Control (Valletta VTS) on VHF channel 12 and maritime enforcement vessels operating in the areas.

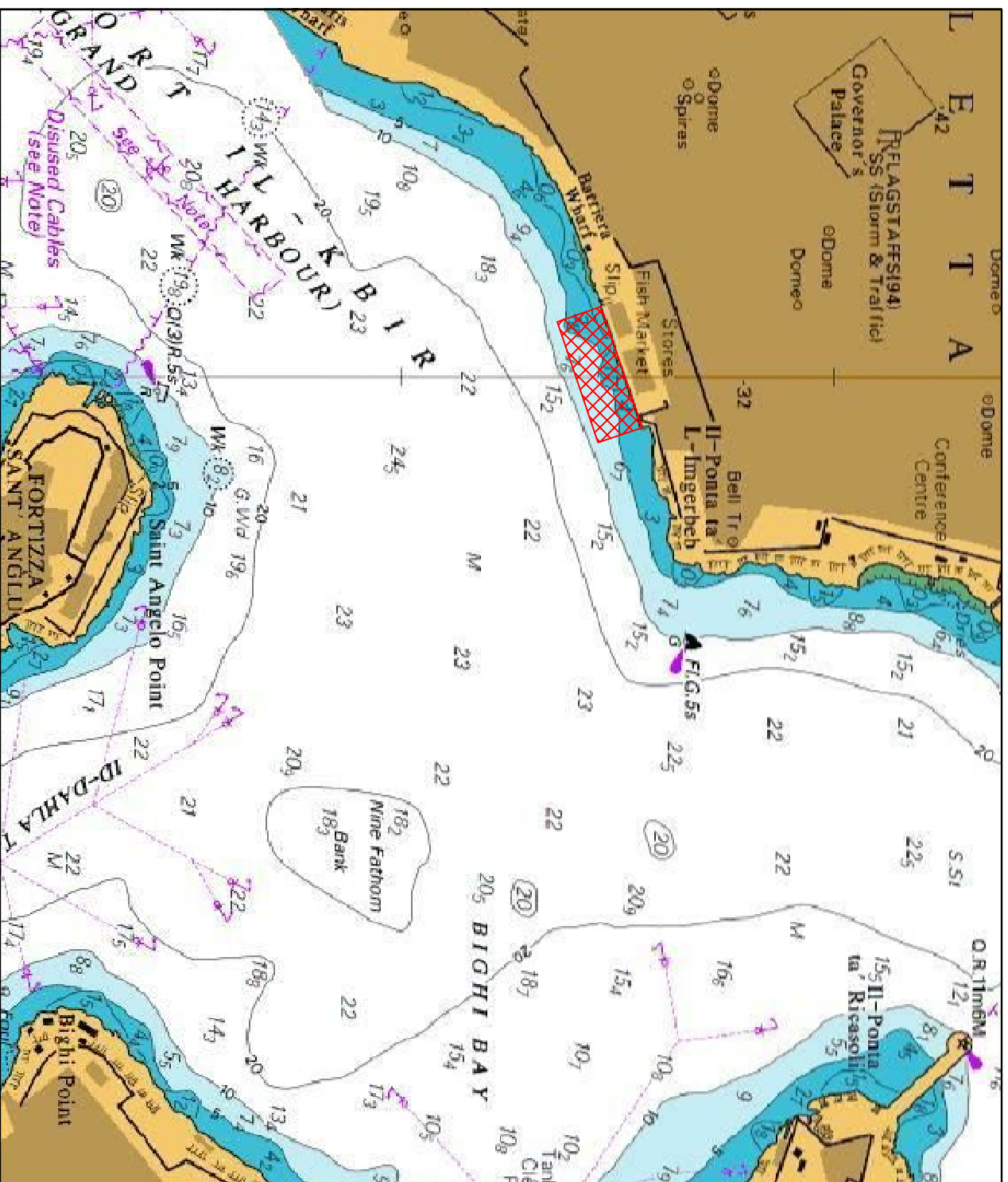
Charts affected: BA 177, 2538

All positions are referred to WGS 84 DATUM.

The UK Hydrographic Office makes the accompanying data available to Transport Malta under the terms and conditions of agreement HD 1427/020930/01.

Whilst the UK Hydrographic Office has endeavoured to ensure that the material supplied is suitable for the purpose described, it accepts no liability (to the maximum extent permitted by law) for any damage or loss of any nature arising from its use. The material supplied is used entirely at the Recipient's own risk.





©British Crown Copyright 1970, 1983, 1986, 1988, 1999, 2000.
All rights reserved

The UK Hydrographic Office makes the accompanying data available to Transport Malta under the terms and conditions of agreement HD 1427/020930/01.

DISCLAIMER

Whilst the UK Hydrographic Office has endeavoured to ensure that the material supplied is suitable for the purpose described, it accepts no liability (to the maximum extent permitted by law) for any damage or loss of any nature arising from its use. The material supplied is used entirely at the Recipient's own risk.