



Transport Malta

# AIP SUP MALTA

Civil Aviation Directorate  
Malta Transport Centre  
Pantar Road  
Lija, LJA 2021  
Malta

Tel: (356) 2555 5642

E-mail: [civil.aviation@transport.gov.mt](mailto:civil.aviation@transport.gov.mt)

All correspondence should be addressed to:

Malta NOTAM Office

Malta Air Traffic Services Ltd.

Gate No. 4

Malta International Airport

Triq tal-Isqof

L-Imqabba MQB9057

Malta

Phone: (356) 22 35 55 43

Fax: (356) 22 35 53 32

AFS: LMMMYNYX

**AIP SUP: 003 / 2020**  
**Effective Date: 05-May-2020**  
**Publication Date: 20-Apr-2020**

## Replacement of Runway 05 Approach Lights at Malta International Airport (MIA)

Between 4<sup>th</sup> May 2020 and 17<sup>th</sup> July 2020, MIA will undertake the replacement of the Threshold Runway 05 Approach Lighting system. This will also include the installation of Runway Threshold Identification Lights (RTILs) and the replacement of Runway 05 Threshold Lights (includes co-located Runway 23 End Bar lights). These works will impose limitations on aircraft arriving and departing on Runway 23/05.

Pre-emptive works initiating on the 13<sup>th</sup> of April 2020 will also be undertaken for the deviation of the aerodrome perimeter service road located across the pre-threshold area of Runway 05. The works will be executed at the limit of the RWY 23 RESA and controlled to exclude breach of obstacle limitation surfaces. These works will not pose risk to the operation of aircraft on Runway 23/05. Notwithstanding, work activity within the pre-threshold area of Runway 05 should be expected during permitted approach operations on Runway 05.

This AIP Supplement contains all the differences to the facilities and procedures published within the AIP that will be in effect beyond the effective date.

- All times stated are in UTC.
- Additional information and late changes to this AIP SUP will be announced via NOTAM.
- Operational information will be available on the ATIS.

Further information can be obtained from Malta International Airport as follows:

Head Airport Operations & Business Continuity on:

Email: [martin.dalmas@maltairport.com](mailto:martin.dalmas@maltairport.com)

or Aerodrome Safety Manager on:

Email: [robert.mizzi@maltairport.com](mailto:robert.mizzi@maltairport.com)

### 1. Description of Works

The works covered under this AIP SUP include:

- a. The replacement of Runway 05 approach lights.
- b. Installation of Runway Threshold 05 Identification Lights (RTILs).
- c. Replacement of the Runway 05 Threshold lights and Runway 23 End Bar lights.

The described works under clause (a) and (c) above will impose limitations on aircraft operations on Runway 23/05 as detailed below, throughout the effective period of this AIP SUP.

## 2. Replacement of Runway 05 Approach Lights

### 2.1 Effective Period

0400 on 05<sup>th</sup> May 2020 to 1600 on 17<sup>th</sup> July 2020

#### 2.1.1 Daily work period

Day 1 (Monday) to Day 5 (Friday): 0415 - 1600

Day 6 (Saturday): 0415 - 14:00

Contractor may additionally be required to work during night-time hours. Operating restrictions in such cases will be promulgated by NOTAM.

### 2.2 Effective Restrictions

#### 2.2.1 Runway 05 - Daily, during work periods

Runway 05 limited to locally-based Code A aircraft operations only.

##### Take-off

- Aircraft shall line-up at the temporary threshold bar markings in yellow (co-located with start of Intersection Take-off Runway 05P).
- Crews shall take due account of reduced declared distances detailed within the Table 1 below during the take-off run.
- Runway 23/05 edge lights unavailable.

##### Landing

- Aircraft shall land at/beyond the temporary aiming point indicated on the runway centreline as a yellow circle marking (abreast Apron 5).
- Runway 05 PAPI unavailable.
- Threshold lighting Runway 05 unavailable.
- Runway 23/05 edge lights unavailable.
- Crews of approaching aircraft shall take due account of reduced landing distance available indicated within the Table 1 below.

**Table 1 - RWY 05 Declared Distances Code A Operations (during work periods)**

Alignment Designator	TORA (m)	TODA (m)	ASDA (m)	LDA (m)
RWY 05P	1359	1359	1579	1359

#### 2.2.2 Runway 23 - Daily, during work periods

Runway 23 limited to locally-based Code A aircraft operations only.

##### Take-off

- Intersection Take-off Runway 23Q and 23R withdrawn.
- Take-off from Runway 23 permitted for Code A aircraft subject to the declared distances in Table 2 below.
- Runway end-bar marking unavailable.

- Runway end-bar lights unavailable.

### Landing

- Runway end-bar marking unavailable.
- Runway end-bar lights unavailable.
- Landing Runway 23 permitted for Code A aircraft subject to the declared distances in Table 2 below.

**Table 2 - Runway 23 Declared Distances Code A Operations (during work periods)**

Hold Designator	TORA (m)	TODA (m)	ASDA (m)	LDA (m)
23	1579	1809	1809	1579
Note:				
<ul style="list-style-type: none"> <li>Stopway: 230m x 45m</li> <li>Clearway: 230m x 150m</li> <li>RESA: 420m x 150m</li> </ul>				

### 2.2.3 Runway 23/05 Restrictions – Daily, Outside work periods

The restrictions below shall apply outside work periods during Replacement of Runway 05 Approach Lighting system:

- Approach lighting on Runway 05 limited to centreline lights.
- RESA Runway 23 unavailable.
- Uneven ground within pre-threshold area Runway 05 due to works.
- Runway 23/05 closed to Code D aircraft.

## 3. Replacement of Runway 05 Threshold / Runway 23 End-bar Lighting

### 3.1 Effective Period

0400 on 27<sup>th</sup> May 2020 to 1600 on 12<sup>th</sup> June 2020

#### 3.1.1 Daily work period

Day 1 (Monday) to Day 5 (Friday): 0415 - 1600

Day 6 (Saturday): 0415 - 1400

Contractor may additionally be required to work during night-time hours. Operating restrictions in such cases will be promulgated by NOTAM.

### 3.2 Effective Restrictions

#### 3.2.1 Runway 05 - Daily, during work periods

Refer to Clause 2.2.1.

#### 3.2.2 Runway 23 - Daily, during work periods

Refer to Clause 2.2.2.

#### 3.2.3 Runway 23/05 Restrictions - Daily, Outside work periods

RWY 23/05 closed to aircraft operations except for permitted taxiing and approved aircraft engine run-ups.

#### **4. Obstacle control on the work site**

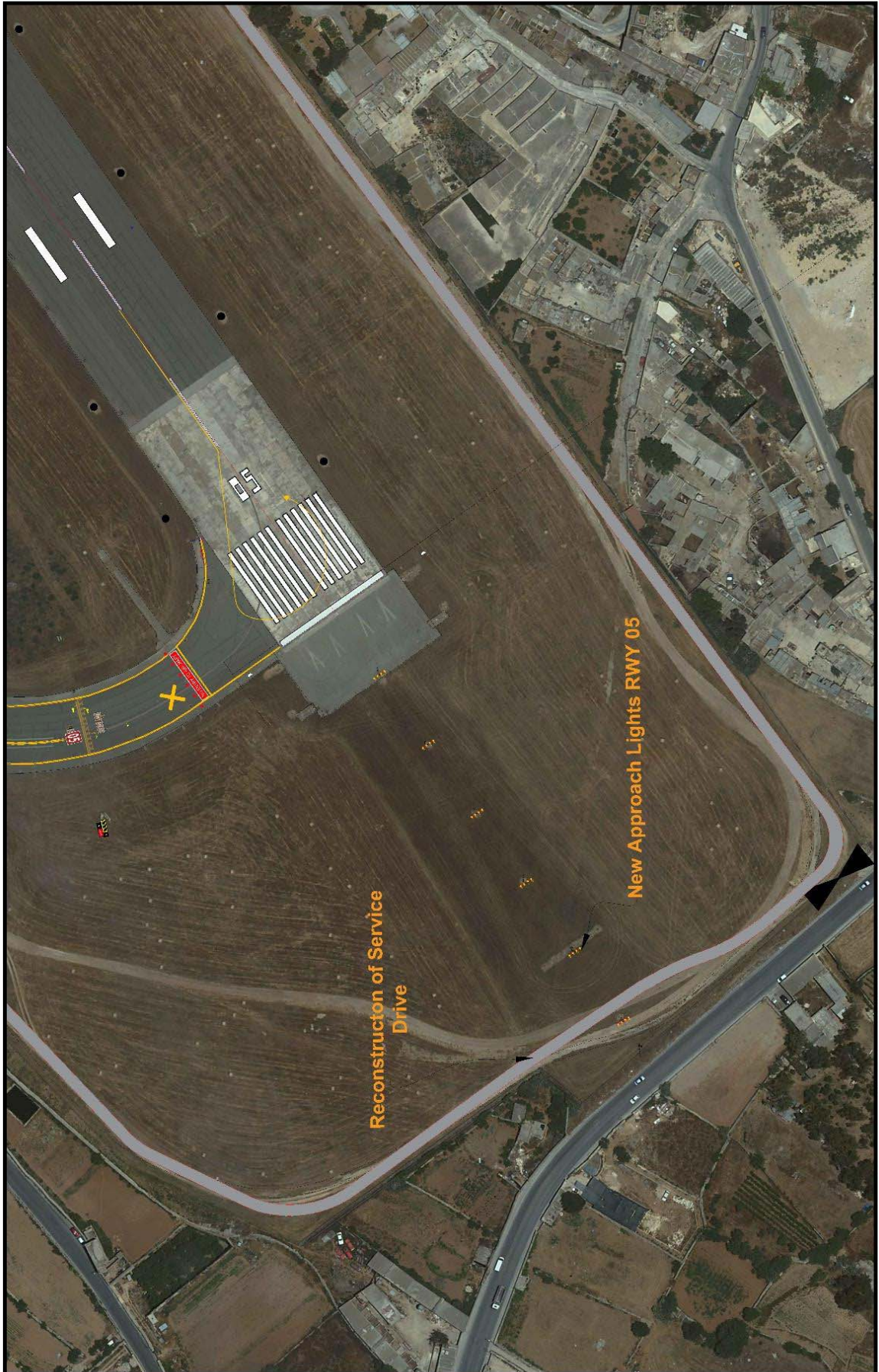
- Construction equipment will be withdrawn to a designated staging area at the limit of the strip outside the working periods.
- Uneven ground, including shallow trenches and low-lying material heaps, should be expected within the runway strip areas, ahead of Threshold Runway 05, during work periods.
- Temporary presence of high equipment during work periods will be covered by NOTAM.
- Pilots should expect the presence of personnel, equipment and construction activity within the work zone located at the pre-threshold area of Runway 05.

#### **5. Other restrictions during the effective period**

- Extraordinary requirements or conditions will be covered by NOTAM.
- In the event that Runway 13/31 will become unavailable due to adverse weather or any other reason and subject to successful ad-hoc assessment between MIA and MATS, exceptional arrangements may be considered for the alternate use of Runway 23/05 for Code C operations.
- Training and circuit flights may be restricted.

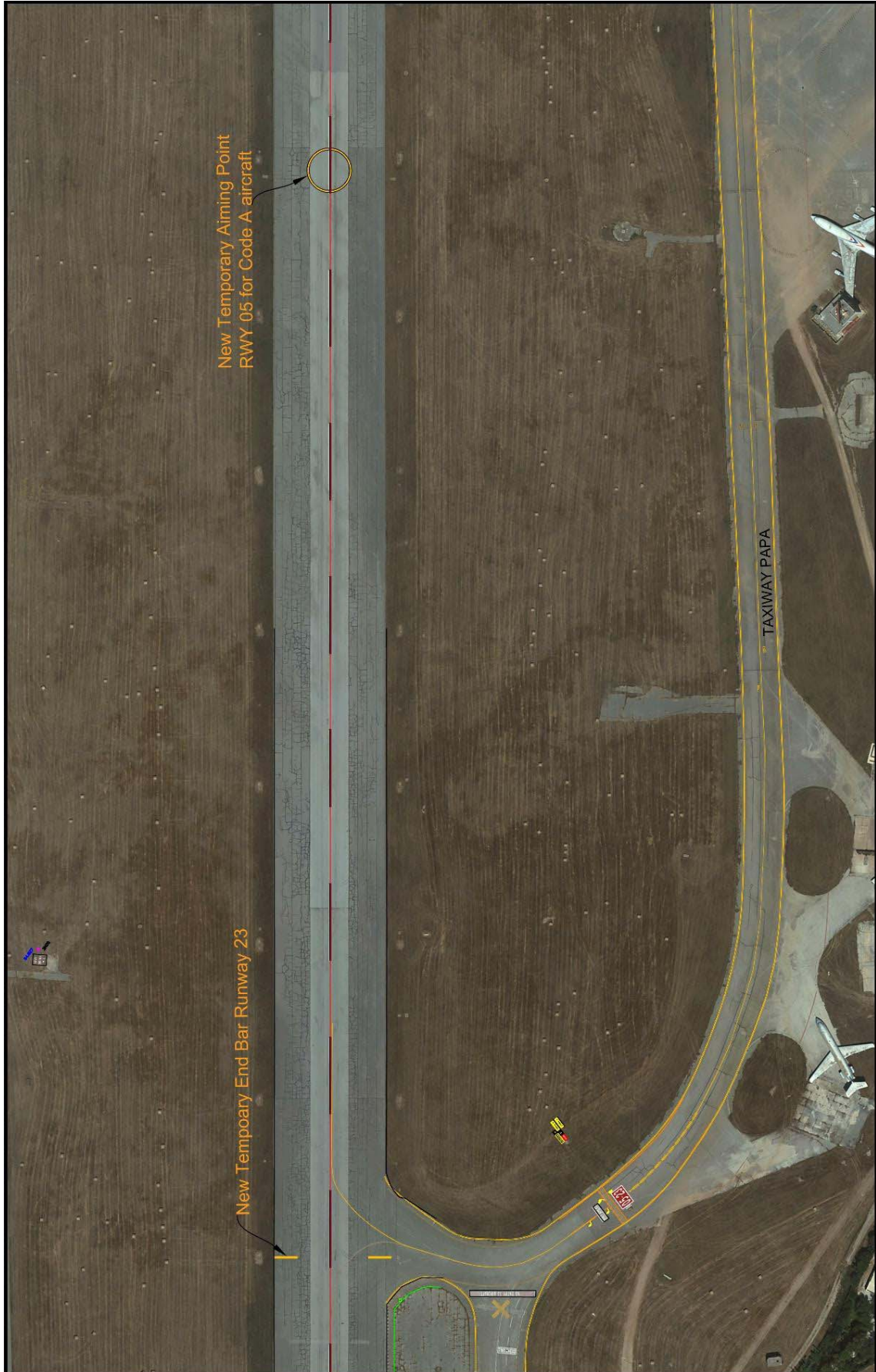


Appendix 1 Reconstruction of Service Road & Replacement of Approach Lights at the Pre-Threshold Area Runway 05



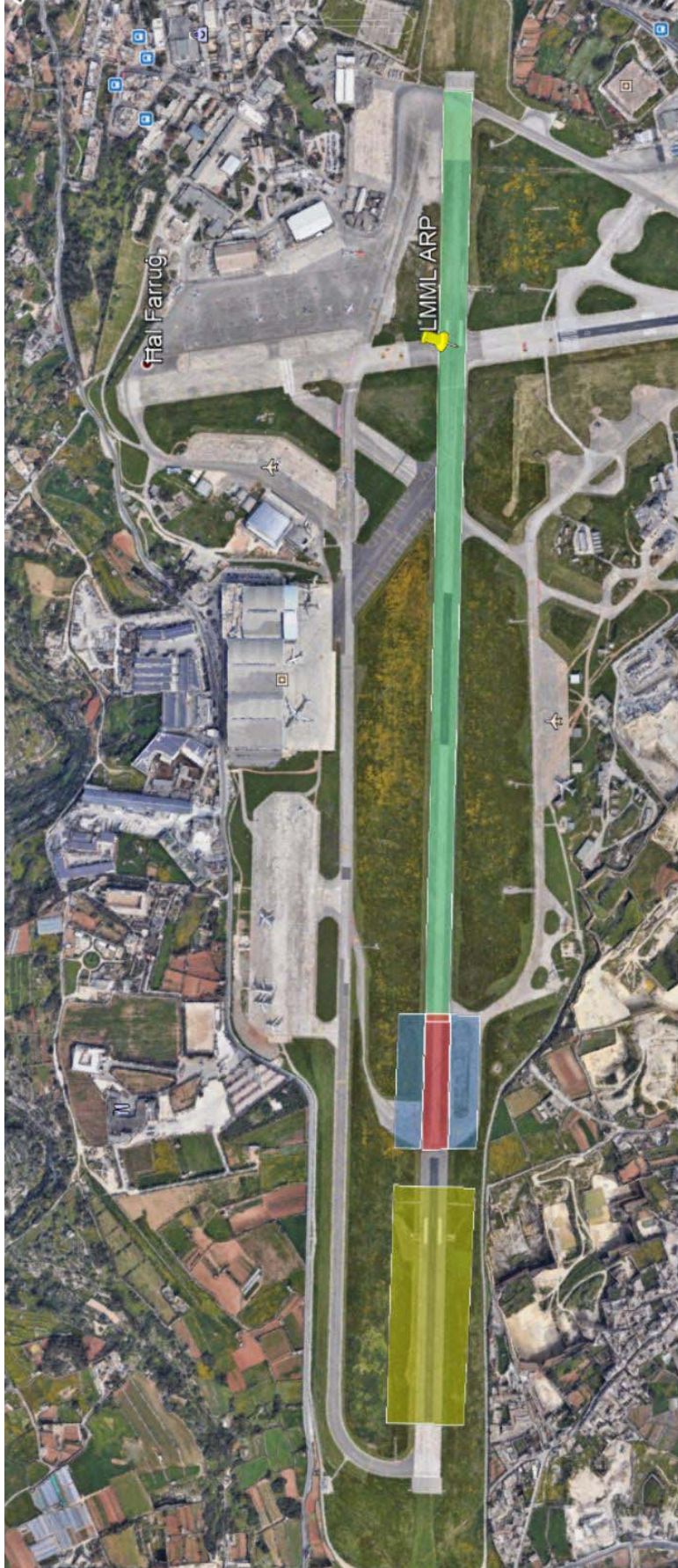


Appendix 2 Temporary Runway markings for locally based Code A aircraft





Appendix 3 Runway 23 Temporary Declared Distances (Code A)



<b>RWY 23 Temporary Declared Distances (Code A)</b>	TORA	1579 x 45
	Stopway	230 x 45
	Clearway	230 x 150
	RESA	420 x 150

**THIS PAGE INTENTIONALLY LEFT BLANK**