



Transport Malta

Malta Transport Centre
Marsa, MRS 1917
Malta

Tel: (356) 2122 2203
Fax: (356) 2125 0365
Email: info.tm@transport.gov.mt

www.transport.gov.mt

PORTS AND YACHTING DIRECTORATE

LOCAL NOTICE TO MARINERS No 88 of 2015

Our Ref: **TM/PYD/ 83/97/02**

16 October 2015

Radio Controlled Model Sailing Boats races in Birzebbugia Bay

The Ports and Yachting Directorate, Transport Malta would like to notify mariners that Model Sailing Boats races will be organized in Birzebbugia Bay. The sailing races which will include 1 meter long sailing boats will be held off the Water's Edge Hotel between Friday, 30 October 2015 and Sunday, 1 November 2015.

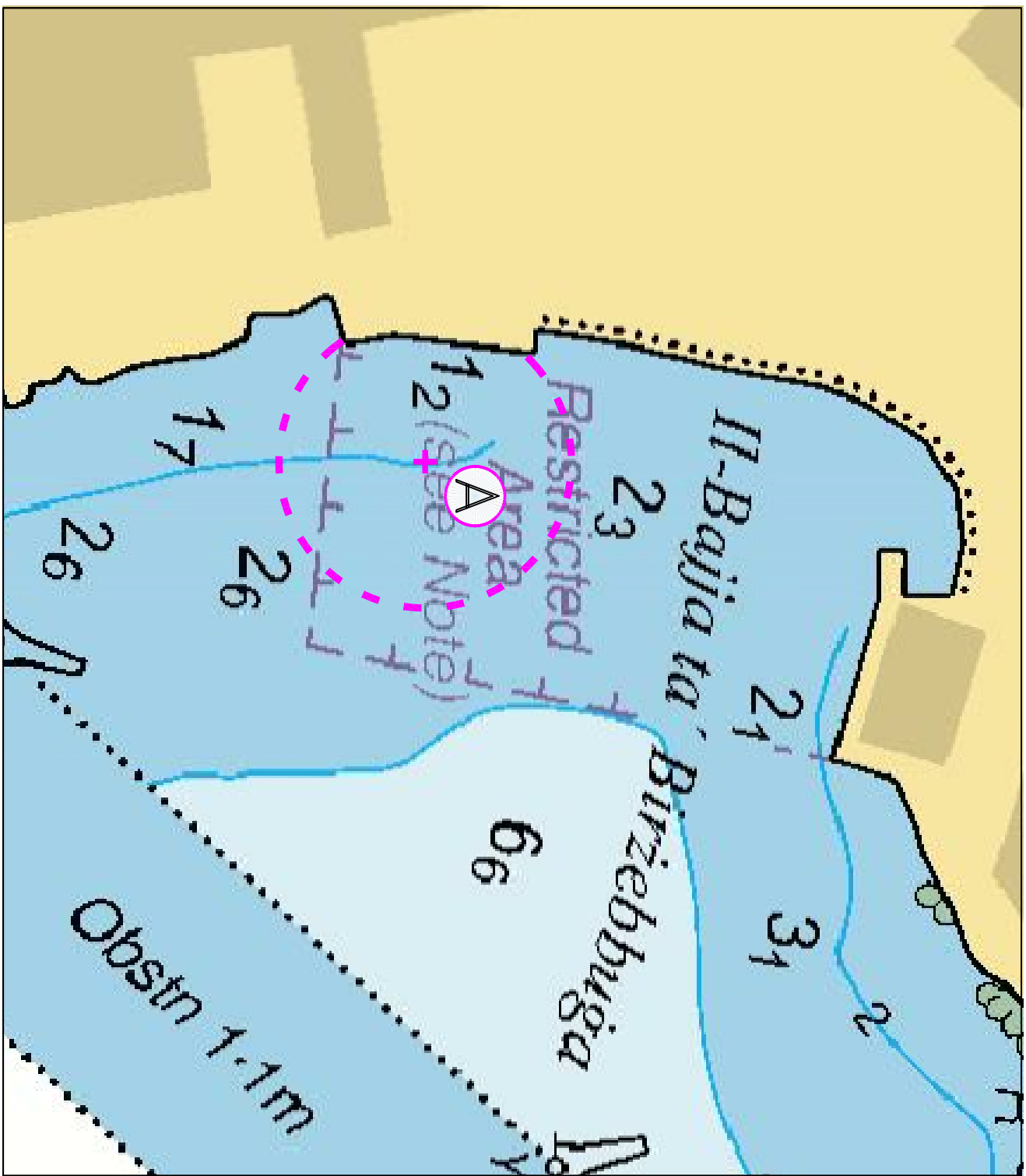
These races shall be held between 0930 hours and 1600 hours (local time) on all days.

The races will take place within the area bounded by an imaginary circle of radius 50 metres centered on point A as shown on attached chart.

POSITION	LATITUDE (N)	LONGITUDE (E)
A	35° 49'.441	14° 31'.798

Masters of all vessels not directly involved in this event are asked to keep clear of the racing area and observe any instructions that may be given by the event organisers safety vessels and by Valletta Port Control (VTS).

Charts effected: BA 36, 2538



©British Crown Copyright 1970, 1983, 1986, 1988, 1999, 2000.
All rights reserved

The UK Hydrographic Office makes the accompanying data available to Transport Malta under the terms and conditions of agreement MD 1427/020930/01.

DISCLAIMER

Whilst the UK Hydrographic Office has endeavoured to ensure that the material supplied is suitable for the purpose described, it accepts no liability (to the maximum extent permitted by law) for any damage or loss of any nature arising from its use. The material supplied is used entirely at the Recipient's own risk.