



PORTS AND YACHTING DIRECTORATE

Transport Malta

## LOCAL NOTICE TO MARINERS No. 87 of 2015

Malta Transport Centre  
Marsa, MRS 1917  
Malta

Our Ref: TM/PYD/129/05

Tel: (356) 2122 2203  
Fax: (356) 2125 0365  
Email: [info.tm@transport.gov.mt](mailto:info.tm@transport.gov.mt)

15 October 2015

[www.transport.gov.mt](http://www.transport.gov.mt)

### Maritime Restrictions between 10 and 13 November 2015

The Ports and Yachting Directorate, Transport Malta notifies all mariners that the Valletta Summit on Migration will be held in Malta between Wednesday 11<sup>th</sup> November 2015 and Thursday 12<sup>th</sup> November 2015.

In relation to the above, the Government of Malta notifies that Maritime Restrictions and Maritime Exclusion Zones have been established.

The Maritime Restrictions and Maritime Exclusion Zones are delineated by imaginary lines and the coastline.

#### Maritime Exclusion Zone (MEZ)

Mariners are informed that no navigation or transit within the MEZs will be permitted when these zones are active as indicated in the dates and times below. The Armed Forces of Malta patrol vessels are authorised to use force in cases of non-compliance.

#### Zone 1 Valletta Harbour and its Approach

**Wednesday 11<sup>th</sup> November 2015 from 1715 hrs to 1830 hrs and from 2130 hrs to 2300 hrs**

**Thursday 12<sup>th</sup> November 2015 from 0730 hrs to 0945 hrs and from 1245 hrs to 1400 hrs.**

The area is a sector of radius one (1) Nautical Mile centred on Point X, to point O then an arch to point P, along the coast to point Q, to an imaginary line to point R then along the coast to point X (St Elmo Fort)

Point	Latitude (N)	Longitude (E)
X	35° 54' .200	14° 31' .200 (Coast)
O	35° 55' .100	14° 31' .200
P	35° 53' .600	14° 32' .200 (Coast)
Q	35° 53' .159	14° 30' .633
R	35° 53' .319	14° 30' .465

The area is hatched in black on attached chart.



Transport Malta

### Maritime Restriction Zones (MRZs)

Mariners are informed that activities and navigation may be restricted in designated MRZs. Vessels operating in MRZs are to ensure constant watch on VHF CH16 and comply with any instructions issued by AFM, Police, TM enforcement vessels, Valletta Port Control (Valletta VTS) and any UK Royal Navy units authorised to operate in such areas.

**Zone 2**      **Marsamxett Harbour** and

**Zone 3**      **Off St. George's Point**

**From 0700 hrs Tuesday 10 November 2015 to 1900 hrs Friday 13 November 2015.**

Point	Latitude (N)	Longitude (E)
A	35° 54' .410	14° 30' .920 (Coast)
B	35° 55' .980	14° 32' .720
C	35° 57' .900	14° 30' .290
D	35° 56' .200	14° 28' .370 (Coast)

These area are hatched in magenta on attached chart

### Territorial Seas

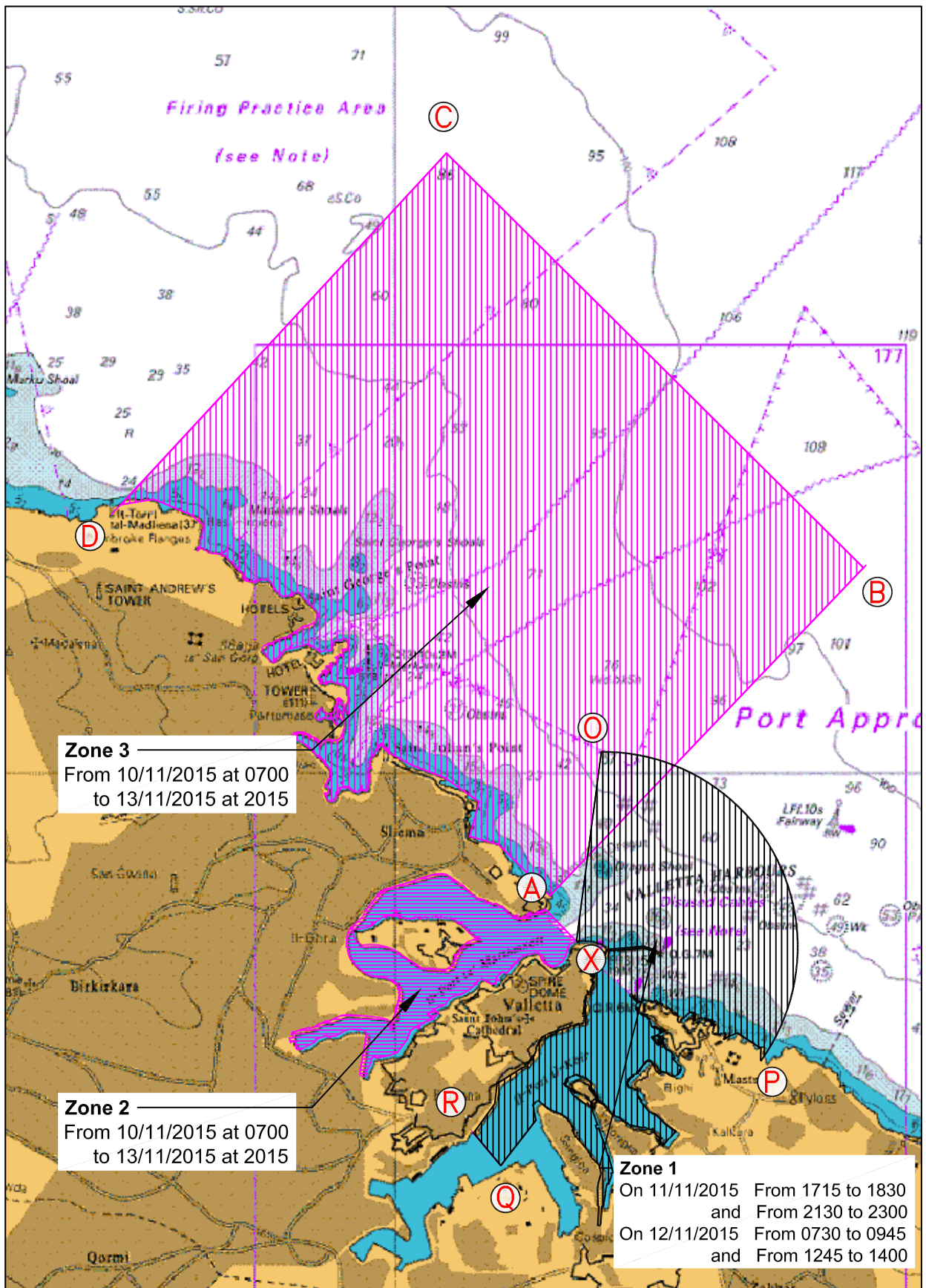
Mariners are informed that security forces will be operating throughout the full extent of Maltese Territorial Seas. Any vessel may be approached and subjected to a verbal challenge to which they are obliged to respond.

Mariners are instructed to comply with instructions given by Valletta Port Control (Valletta VTS), the Armed Forces of Malta patrol vessels, T.M. enforcement vessels and UK Royal Navy Vessels in the area. Force may be used by the crew of the patrol vessels in cases of non-compliance. **Only authorised vessels will be allowed to transit or enter the restricted zones mentioned above.**

Part of BA chart 194 attached

Charts affected: BA 177, 194, 2537, 2538

All positions are referred to WGS 84 DATUM.



British Crown Copyright 1970, 1983, 1986, 1988, 1999, 2000.

The UK Hydrographic Office makes the accompanying data available to Transport Malta under the terms and conditions of agreement HO 1427/020930/01.

Whilst the UK Hydrographic Office has endeavoured to ensure that the material supplied is suitable for the purpose described, it accepts no liability (to the maximum extent permitted by law) for any damage or loss of any nature arising from its use. The material supplied is used entirely at the Recipient's own risk.