



Transport Malta

Malta Transport Centre
Marsa, MRS 1917
Malta

Tel: (356) 2122 2203
Fax: (356) 2125 0365
Email: info.tm@transport.gov.mt

www.transport.gov.mt

PORTS AND YACHTING DIRECTORATE

LOCAL NOTICE TO MARINERS NO 86 of 2015

Our Ref: TM/PYD/83/97 Vol V

15 October 2015

Dragon Boat Malta - Canoe Race at Marsamxett Harbour

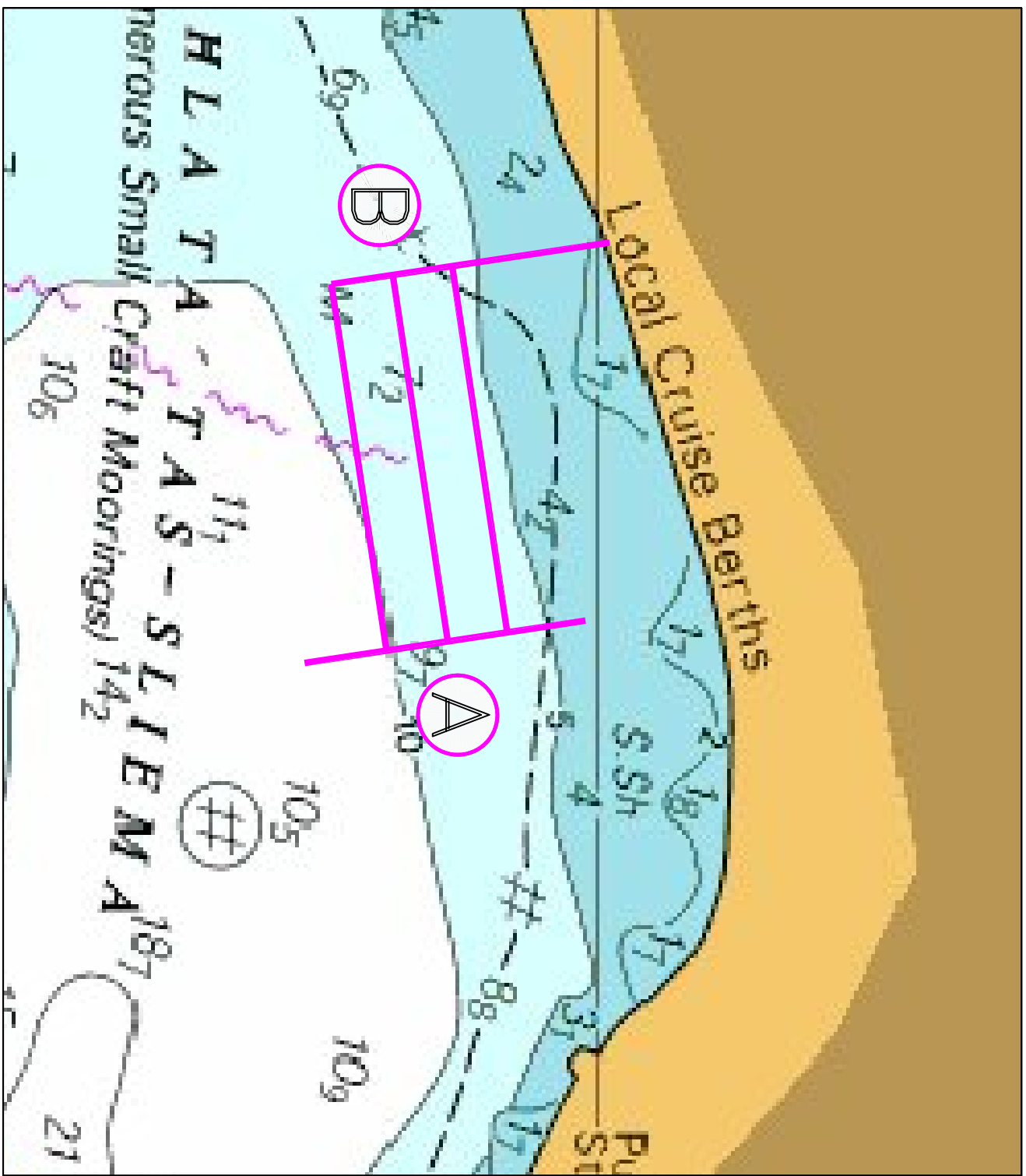
Dragon Boat Malta will be holding a Dragon boat race in Sliema Creek, Marsamxett Harbour on Sunday 25 October 2015 between 0830 hours and 1700 hours.

The start and finish will be at the Strand – Sliema, opposite to the Sliema Hotel. The races will mainly follow the route as per attached chartlet (from point A to point B).

Mariners navigating in Sliema Creek are to take note of the above and keep a sharp lookout for the canoeists, to give a wide berth and navigate at very slow speed.

Should weather conditions be unfavourable, the races will be held closer to the coast.

Chart Affected BA Chart 177



©British Crown Copyright 1970, 1983, 1986, 1988, 1999, 2000.
All rights reserved

The UK Hydrographic Office makes the accompanying data available to Transport Malta under the terms and conditions of agreement HQ 1427/020930/01.

DISCLAIMER

Whilst the UK Hydrographic Office has endeavoured to ensure that the material supplied is suitable for the purpose described, it accepts no liability (to the maximum extent permitted by law) for any damage or loss of any nature arising from its use. The material supplied is used entirely at the Recipient's own risk.