



**Transport Malta**

Malta Transport Centre  
Marsa, MRS 1917  
Malta

Tel: (356) 2122 2203  
Fax: (356) 2125 0365  
Email: [info.tm@transport.gov.mt](mailto:info.tm@transport.gov.mt)

[www.transport.gov.mt](http://www.transport.gov.mt)

PORTS AND YACHTING DIRECTORATE

## LOCAL NOTICE TO MARINERS NO 84 of 2015

Our Ref: **TM/PYD/63/95 Vol IV**

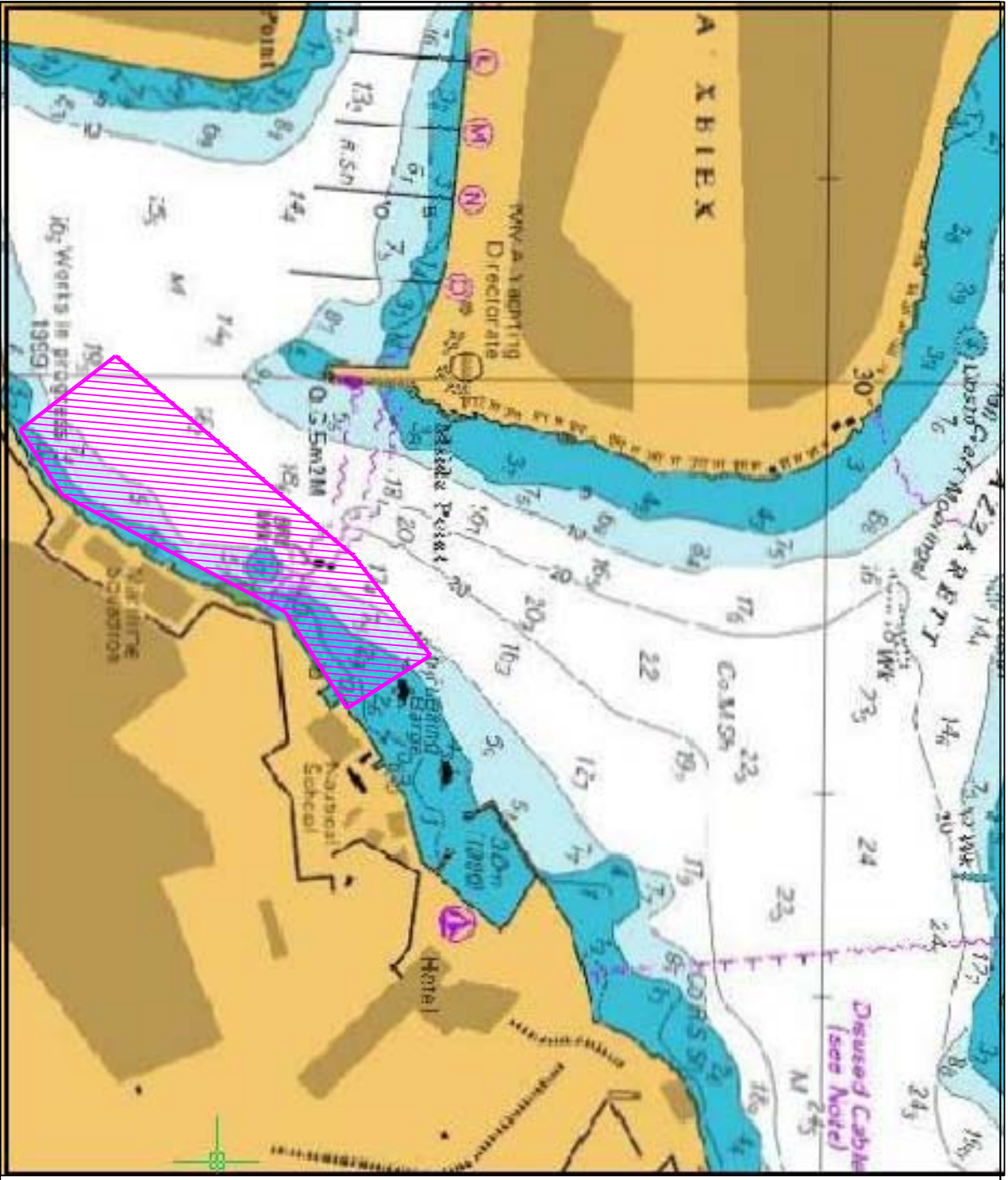
**9 October, 2015**

### **Diving Survey at Hay Wharf, Marsamxett Harbour.**

The Ports and Yachting Directorate, Transport Malta notifies mariners that with immediate effect a diving survey will be conducted off Hay Wharf in Marsamxett Harbour, as shown hatched on attached part of BA chart 177. The activity is expected to be completed by Monday 19 October 2015. AFM support vessels will be in the area assisting the divers.

Mariners are instructed to contact Malta VTS and Valletta Port Control prior to entering Marsamxett Harbour. They are advised to navigate with caution and slow speed when in the vicinity of the above-indicated area. Mariners are also notified to abide with any instructions from Valletta VTS (Valletta Port Control) on VHF Channel 12.

Chart Affected: BA Chart 177



© British Crown Copyright 1970, 1983, 1986, 1988, 1999, 2000.  
All rights reserved

The UK Hydrographic Office makes the accompanying data available to Transport Malta under the terms and conditions of agreement HD 1427/020930/01.

**DISCLAIMER**

Whilst the UK Hydrographic Office has endeavoured to ensure that the material supplied is suitable for the purpose described, it accepts no liability (to the maximum extent permitted by law) for any damage or loss of any nature arising from its use. The material supplied is used entirely at the Recipient's own risk.