



**Transport Malta**

Malta Transport Centre  
Marsa, MRS 1917  
Malta

Tel: (356) 2122 2203  
Fax: (356) 2125 0365  
Email: [info.tm@transport.gov.mt](mailto:info.tm@transport.gov.mt)

[www.transport.gov.mt](http://www.transport.gov.mt)

PORTS AND YACHTING DIRECTORATE

## NOTICE TO MARINERS NO 25 of 2015

Our Ref: **TM/PYD/ 299/81 Vol XII**

**21 July, 2015**

### **Removal of LPG Mooring Facility at Marsaxlokk Harbour.**

Reference is made to BA Chart 36 – Marsaxlokk .

The Ports and Yachting Directorate, Transport Malta, notifies mariners that the 3 mooring buoys of the LPG offshore facility at Marsaxlokk Harbour, will be removed together with all ground tackle.

The removal works are expected to start on Monday 27 July 2015 and are expected to take 5 days. The works will be carried out from floating crane barge Bezz III and assisted by workboat 46.

This operation will include diving works.

The buoys location is as follows

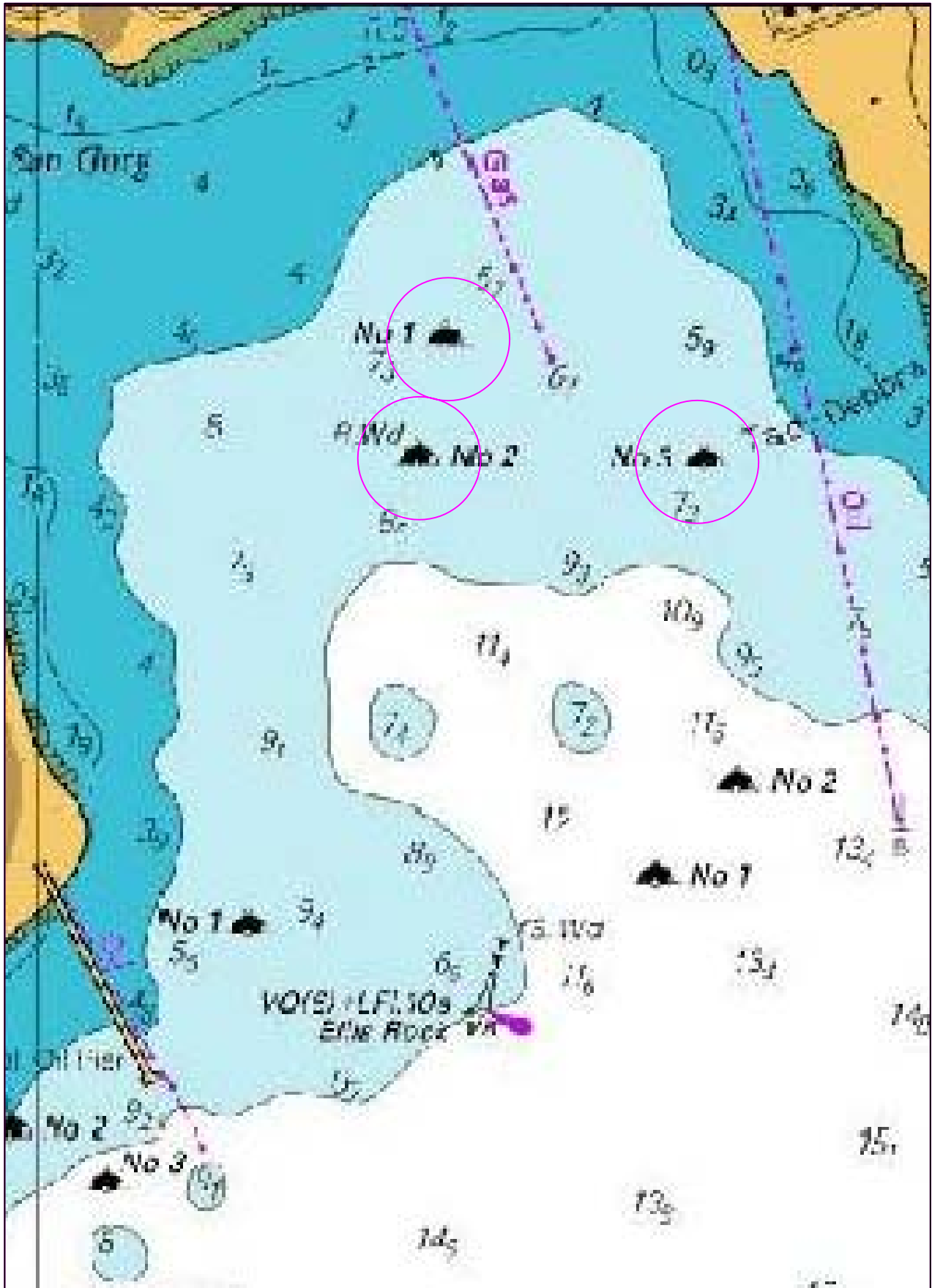
	<b>Latitude (N)</b>	<b>Longitude (E)</b>
<b>Buoy No 1</b>	<b>35° 49' .835</b>	<b>14° 32' ..200</b>
<b>Buoy No 2</b>	<b>35° 49' .775</b>	<b>14° 32' .140</b>
<b>Buoy No 3</b>	<b>35° 49' .750</b>	<b>14° 32' .275</b>

The barges will remain in position during dark hours and will display an all round white light as per International Regulations for Preventing Collisions at sea.

Mariners are advised to note the above and proceed with caution and slow speed when navigating in the area. They are to give a wide berth of 100m. They are to follow instructions as issued by Marsaxlokk Port Control (Marsaxlokk VTS) on VHF Channel 14.

Mariners are also informed to delete these buoys from their navigation charts.

Chart Affected: BA Chart 36



©British Crown Copyright 1970, 1983, 1986, 1988, 1999, 2000.  
All rights reserved

The UK Hydrographic Office makes the accompanying data available to Malta Transport under the terms and conditions of agreement HD 1427/020930/01.

**DISCLAIMER**

Whilst the UK Hydrographic Office has endeavoured to ensure that the material supplied is suitable for the purpose described, it accepts no liability (to the maximum extent permitted by law) for any damage or loss of any nature arising from its use. The material supplied is used entirely at the Recipient's own risk.